

QE Learner Booking

Version: 6.0 Issue Date: 26/10/2015

Document Version History

Version	Status	Approval Date	Issue Date	Modified by	Description
1.0	Approved: Recommended		25/09/2014	ISB	
2.0	Approved: Recommended		27/11/2012	ISB	
3.0	Approved: Recommended		23/07/2013	ISB	Updated due to a change to the Primary key of the entity QE Learner booking
4.0	Approved: Recommended	17/02/2014	07/04/2012	ISB	A2C_Cetnre_Test_System_Id has been added.
5.0	Approved: Recommended	25/06/2014	04/08/2014	ISB	Diagrams revised to show changes in related BDS
6.0	Approved: Recommended	19/08/2015	26/10/2015	ISB	Qual_Frmwrk_Level_Type attribute deleted and attribute Qualification_Framework_Level added

Contents

1	<i>Data Standard</i>	3
1.1	Introduction	3
1.1.1	Application	3
1.1.2	Compatibility with non-ISB standards	3
1.1.3	Terminology and notation	4
1.2	Entity Definition Model	5
1.3	Attribute Model	6
1.4	Data Definitions	7
1.4.1	Entity: QE Learner Booking	7
2	<i>Changes from previous version</i>	14
3	<i>References</i>	14
4	<i>Notes</i>	14
5	<i>Copyright Notice</i>	15

1 DATA STANDARD

1.1 Introduction

1.1.1 Application

This standard allows for a Learner to be associated onto a previously made qualification element booking.

1.1.2 Compatibility with non-ISB standards

There are no known compatibility issues related to this standard.

1.1.3 Terminology and notation

The following sections contain:

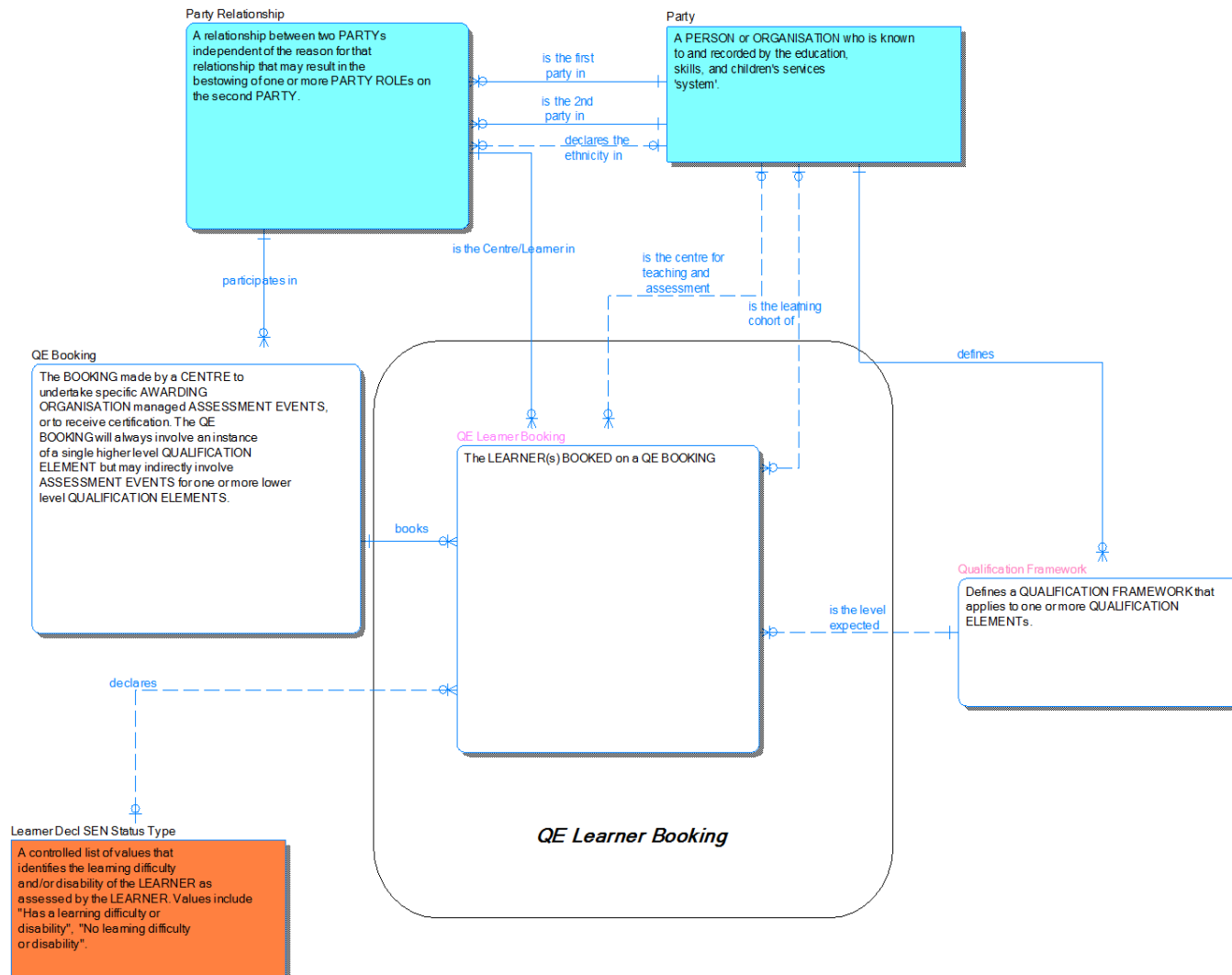
- **Entity Definition Model** – A high level diagram showing: entities; their descriptions and relationships
- **Attribute Model** – A lower level diagram showing the names of attributes making up entities. Attributes in the top section of an entities box are those making up its primary key
- **Data Definitions** – Detailed descriptions of each of the entities at an attribute level, showing attribute: name; definition; whether it is part of a key; whether it is mandatory; its data type and format; parent information and Controlled List association

Only those entities within the boundary square in the diagrams are part of this particular data standard, entities outside the boundary are shown for context purposes only (and can be found within other Business Data Standards), or separate Controlled List reference data.

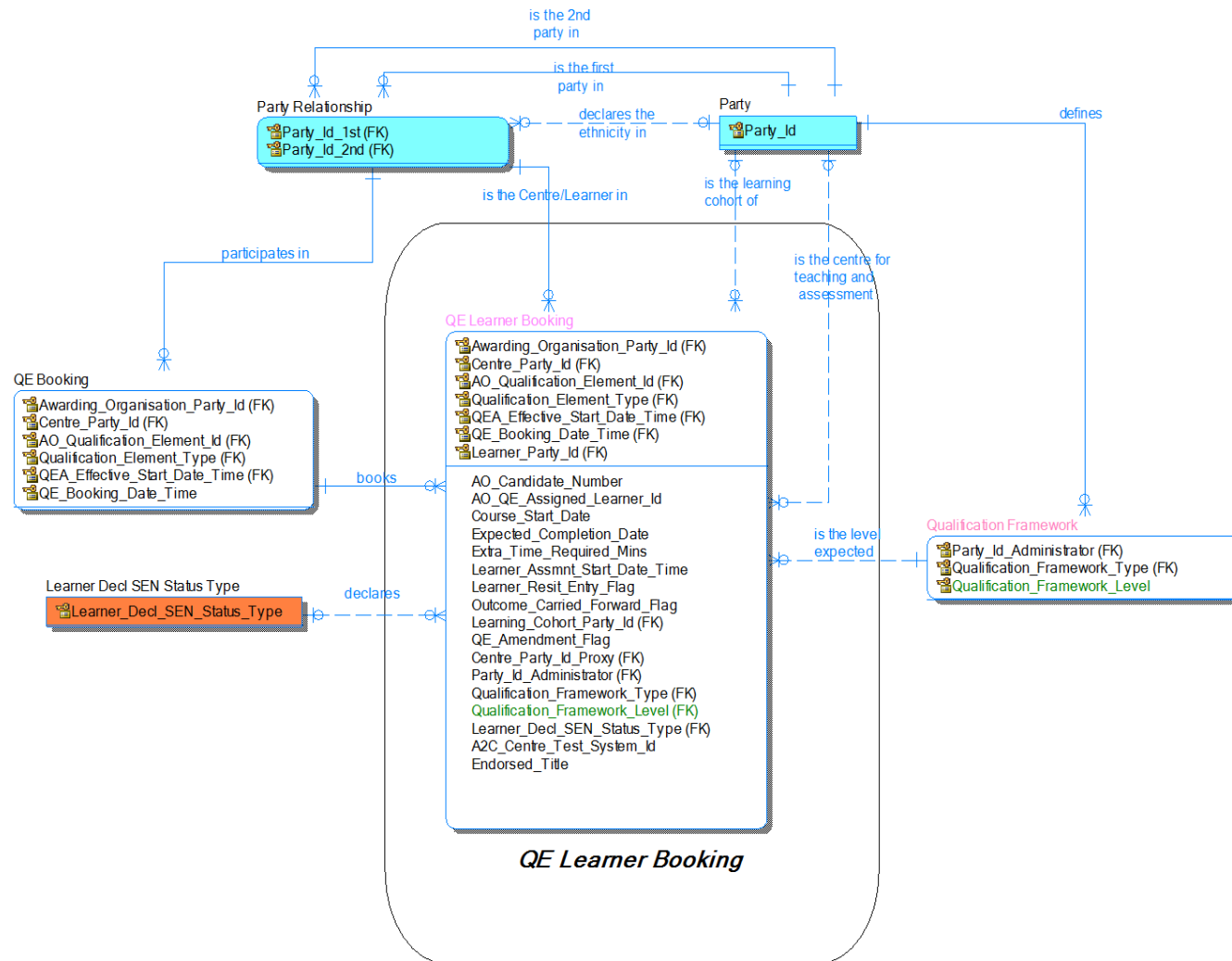
The standards for naming, notation and conventions used for this development can be found in the BDA Data Architecture Modelling Standards document. For convenience, a quick reference of the colours used in these diagrams is shown below.



1.2 Entity Definition Model



1.3 Attribute Model



1.4 Data Definitions

1.4.1 Entity: QE Learner Booking

The LEARNER(s) BOOKED on a QE BOOKING.

Attribute Name	Attribute Definition	P K	F K	M	Datatype	FK Source Entity	FK Source Attribute	Controlled List
Awarding_Organisation_Party_Id	A value that denotes and distinguishes the PARTY.	Y	Y	Y	Unicode_String(1,32)	QE Booking	Awarding_Organisation_Party_Id	
Centre_Party_Id	A value that denotes and distinguishes the PARTY.	Y	Y	Y	Unicode_String(1,32)	QE Booking	Centre_Party_Id	
AO_Qualification_Element_Id ¹	A value that uniquely identifies a specific part of a Qualification and applies to one or more QUALIFICATION ELEMENT(s) within an AWARDING ORGANISATION.	Y	Y	Y	Unicode_String(1,50)	QE Booking	AO_Qualification_Element_Id	

¹ The same value may be used for a number of QUALIFICATION ELEMENTS provided they are differentiated by Qualification_Element_Type.

Attribute Name	Attribute Definition	P K	F K	M	Datatype	FK Source Entity	FK Source Attribute	Controlled List
Qualification_Element_Type	A controlled list of values that denotes the type and behaviour of the specific QUALIFICATION ELEMENT. Values are "Scheme", "Award", "Learning Unit", "Pathway", "Assessable".	Y	Y	Y	Unicode_String(1,32)	QE Booking	Qualification_Element_Type	
QEA_Effective_Start_Date_Time	The effective date and time of the QE AVAILABILITY.	Y	Y	Y	Simple_Date Time	QE Booking	QEA_Effective_Start_Date_Time	
QE_Booking_Date_Time	The specific date and time that the QE BOOKING was created.	Y	Y	Y	Simple_Date Time	QE Booking	QE_Booking_Date_Time	
Learner_Party_Id	A value that denotes and distinguishes the PARTY.	Y	Y	Y	Unicode_String(1,32)	Party Relationship	Party_Id_2nd	

Attribute Name	Attribute Definition	P K	F K	M	Datatype	FK Source Entity	FK Source Attribute	Controlled List
AO_Candidate_Nu mber	A number allocated to a LEARNER at a CENTRE on behalf of an AWARDING ORGANISATION because the LEARNER is undertaking a General Qualification. The CENTRE ensures that the 4 digit number is always unique for a LEARNER / AWARDING ORGANISATION relationship within the context of a Series and the CENTRE.	N	N	N	Unicode_Stri ng(4,4)			
AO_QE_Assigned _Learner_Id	An AWARDING ORGANISATION Assigned Identifier for a LEARNER that is associated with a specific QUALIFICATION ELEMENT.	N	N	N	Unicode_Stri ng(7,7)			
Course_Start_Date	The start date for the course that the LEARNER is undertaking.	N	N	N	Simple_Date			
Expected_Complet ion_Date	Date when the CENTRE expects the LEARNER to complete the Qualification.	N	N	N	Simple_Date			

Attribute Name	Attribute Definition	P K	F K	M	Datatype	FK Source Entity	FK Source Attribute	Controlled List
Extra_Time_Required_Mins	Indicates how much extra time is required by the LEARNER. This must be within the extra time allowed in the QUALIFICATION ELEMENT.	N	N	N	Simple_Integer(1,3)			
Learner_Assmnt_Start_Date_Time	The Assessment start date and time for a Test Resource Booking for this LEARNER.	N	N	N	Simple_Date Time			
Learner_Resit_Entry_Flag	A flag that indicates that the LEARNER has sat this QUALIFICATION ELEMENT Assessment on a previous occasion(s).	N	N	N	Simple_Flag			
Outcome_Carried_Forward_Flag	Indicates that the QE OUTCOME for a QUALIFICATION ELEMENT from a previous Series forms part of this QE BOOKING.	N	N	N	Simple_Flag			
Learning_Cohort_Party_Id	A value that denotes and distinguishes the PARTY.	N	Y	N	Unicode_String(1,32)	Party	Party_Id	

Attribute Name	Attribute Definition	P K	F K	M	Datatype	FK Source Entity	FK Source Attribute	Controlled List
QE_Amendment_Flag	In the case of a new QE LEARNER BOOKING this flag indicates that the QE LEARNER BOOKING is an amendment to a previously submitted LEARNER BOOKING. In the case of a cancelled QE LEARNER BOOKING this flag indicates that the cancellation is a result of an amendment.	N	N	N	Simple_Flag			
Centre_Party_Id_Proxy	A value that denotes and distinguishes the PARTY.	N	Y	N	Unicode_String(1,32)	Party	Party_Id	
Party_Id_Administrator	A value that denotes and distinguishes the PARTY.	N	Y	Y	Unicode_String(1,32)	Qualification Framework	Party_Id_Administrator	

Attribute Name	Attribute Definition	P K	F K	M	Datatype	FK Source Entity	FK Source Attribute	Controlled List
Qualification_Framework_Type	A controlled list of values that identifies QUALIFICATION FRAMEWORK TYPEs that recognise skills and Qualifications by awarding points or credit values. The QUALIFICATION FRAMEWORK assists a LEARNER to make informed decisions about the Qualifications they want to pursue, by comparing the levels of different Qualifications and identifying different progression routes. E.g. "SCQF", "NQF", "QCF", "EQF", "BTEC Customised".	N	Y	Y	Unicode_String(1,50)	Qualification Framework	Qualification_Framework_Type	
Qualification_Framework_Level	Identifies the framework level within a particular QUALIFICATION FRAMEWORK eg "Entry Level", "Level 1"	N	Y	Y	Unicode_String(1,20)	Qualification Framework.	Qualification_Framework_Level	

Attribute Name	Attribute Definition	P K	F K	M	Datatype	FK Source Entity	FK Source Attribute	Controlled List
Learner_Decl_SEN_Status_Type	A controlled list of values that identifies the learning difficulty and/or disability of the LEARNER as assessed by the LEARNER. Values include "Has a learning difficulty or disability", "No learning difficulty or disability".	N	Y	N	Unicode_String(1,50)			Learner Decl SEN Status Type
A2C_Centre_Test_System_Id	An identifier agreed and used between the AWARDING ORGANISATION and the CENTRE; this step is a non-A2C process. Within A2C, where defined in QE PREFERENCES, the CENTRE may be required to provide an agreed identifier for the test system either as part of the Named TRB or Unnamed TRB Update with Learner Details messages, or in a subsequent update to the TRB message. (TRB = Test Resource Booking)	N	N	N	Unicode_String(1,25)			
Endorsed_Title	The title that the CENTRE allocates to the QUALIFICATION ELEMENT.	N	N	N	Unicode_String(1,200)			

2 CHANGES FROM PREVIOUS VERSION

Qual_Frmwrk_Level_Type attributed deleted and new non-identifying attribute Qualification_Framework_Level data type Unicode_String(1,20).

3 REFERENCES

The following references are specific to this Business Data Standard:

- ESCS ISB Business Data Architecture Entity Relationship Diagram, version 11.2
- ESCS ISB, Controlled List, Learner Decl SEN Status Type

The following references apply to all Business Data Standards:

- ESCS ISB Standards Overview and Context
- ESCS ISB “System“ Enterprise Architecture - Business Data Architecture
- ESCS ISB Business Data Architecture Data Types
- ESCS ISB BDA Data Architecture Modelling Standards
- ESCS ISB Management Process

4 NOTES

None.

5 COPYRIGHT NOTICE

© [Crown copyright 2015](#)

The Information Standards Board (ISB) is an advisory body to the Department for Education (DfE) and the Department for Business, Innovation and Skills (BIS). The information it produces is subject to Crown copyright, which is administered by the National Archives.

The Crown copyright protected information in this document (other than ISB or Departmental logos) may be reproduced free of charge in any format or medium under the terms of the Open Government Licence, available from the National Archives website.

Any reuse is subject to the material being reproduced accurately and not used in a misleading context. It must be acknowledged as being protected by Crown copyright and the title of the source material must be supplied with the ISB named as the corporate author.

Authorisation to reproduce any information which is identified as being the copyright of a third party must be obtained from the copyright holders concerned.