

QE Booking

Version: 4.0 **Issue Date:** 27/03/2015

Document Version History

Version	Status	Approval Date	Issue Date	Modified by	Description
1.0	Approved: Recommended	25/09/2012	25/09/2012	ISB	
2.0	Approved: Recommended	11/06/2013	11/06/2013	ISB	Updated due to a change to the Primary Key of the entity QE Booking
3.0	Approved: Recommended	04/08/2014	04/08/2014	ISB	Diagrams revised to reflect changes to related BDS.
4.0	Approved: Recommended	24/02/2015	27/03/2015	ISB	Definition of QE_Booking_Type updated to align example values with revised controlled list

Contents

1	<i>Data Standard</i>	3
1.1	Introduction	3
1.1.1	Application	3
1.1.2	Compatibility with non-ISB standards	3
1.1.3	Terminology and notation	4
1.2	Entity Definition Model	5
1.3	Attribute Model	6
1.4	Data Definitions	7
1.4.1	Entity: QE Booking	7
2	<i>Changes from previous version</i>	10
3	<i>References</i>	10
4	<i>Notes</i>	10
5	<i>Copyright Notice</i>	11

1 DATA STANDARD

1.1 Introduction

1.1.1 Application

This standard allows an assessment centre to book to undertake specific awarding organisation managed assessment events.

The qualification element booking will always involve an instance of a single higher-level qualification element but may indirectly involve associated assessment events for one or more lower-level qualification elements.

1.1.2 Compatibility with non-ISB standards

There are no known compatibility issues related to this standard.

1.1.3 Terminology and notation

The following sections contain:

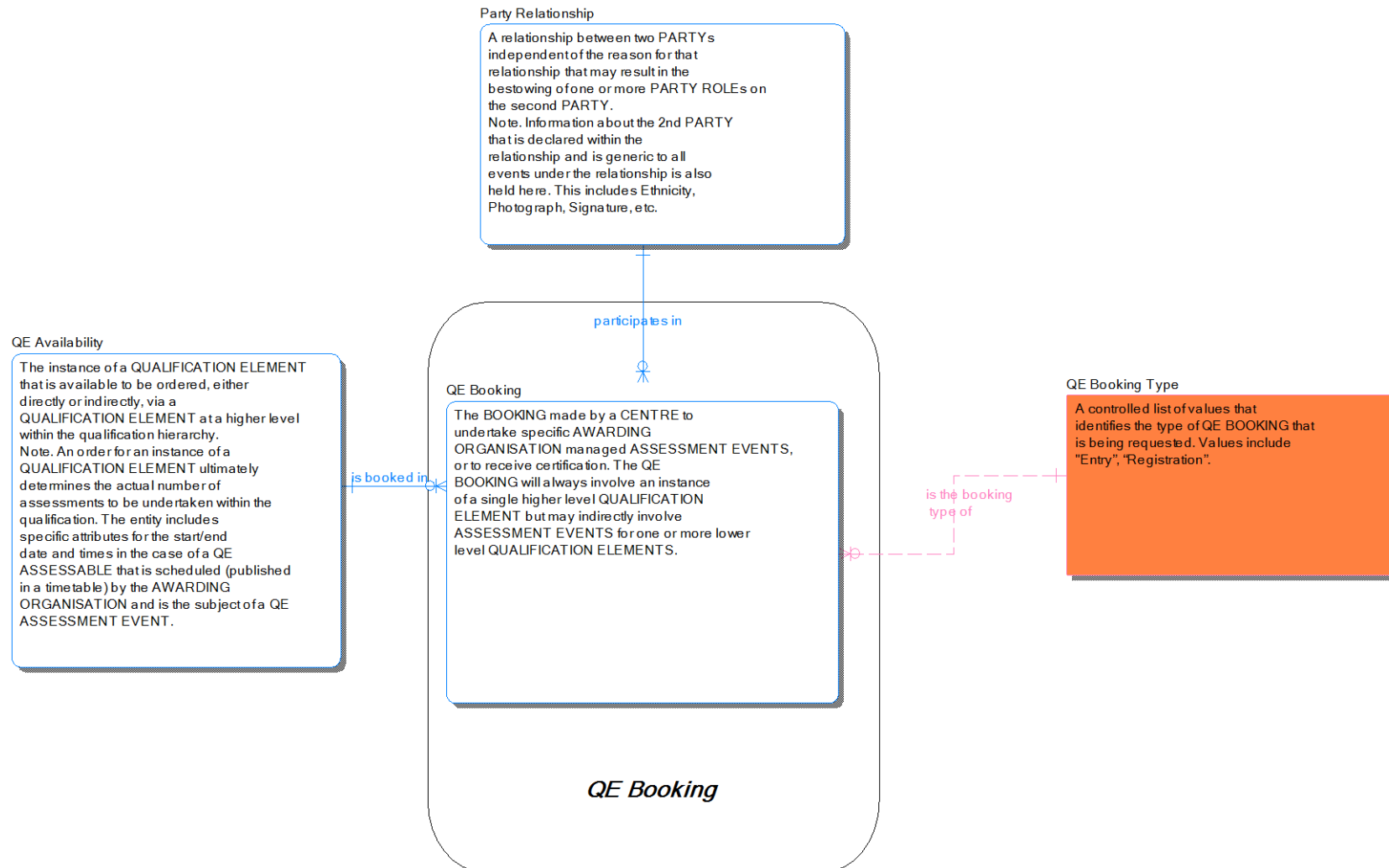
- **Entity Definition Model** – A high level diagram showing: entities; their descriptions and relationships
- **Attribute Model** – A lower level diagram showing the names of attributes making up entities. Attributes in the top section of an entities box are those making up its primary key
- **Data Definitions** – Detailed descriptions of each of the entities at an attribute level, showing attribute: name; definition; whether it is part of a key; whether it is mandatory; its data type and format; parent information and Controlled List association

Only those entities within the boundary square in the diagrams are part of this particular data standard, entities outside the boundary are shown for context purposes only (and can be found within other Business Data Standards), or separate Controlled List reference data.

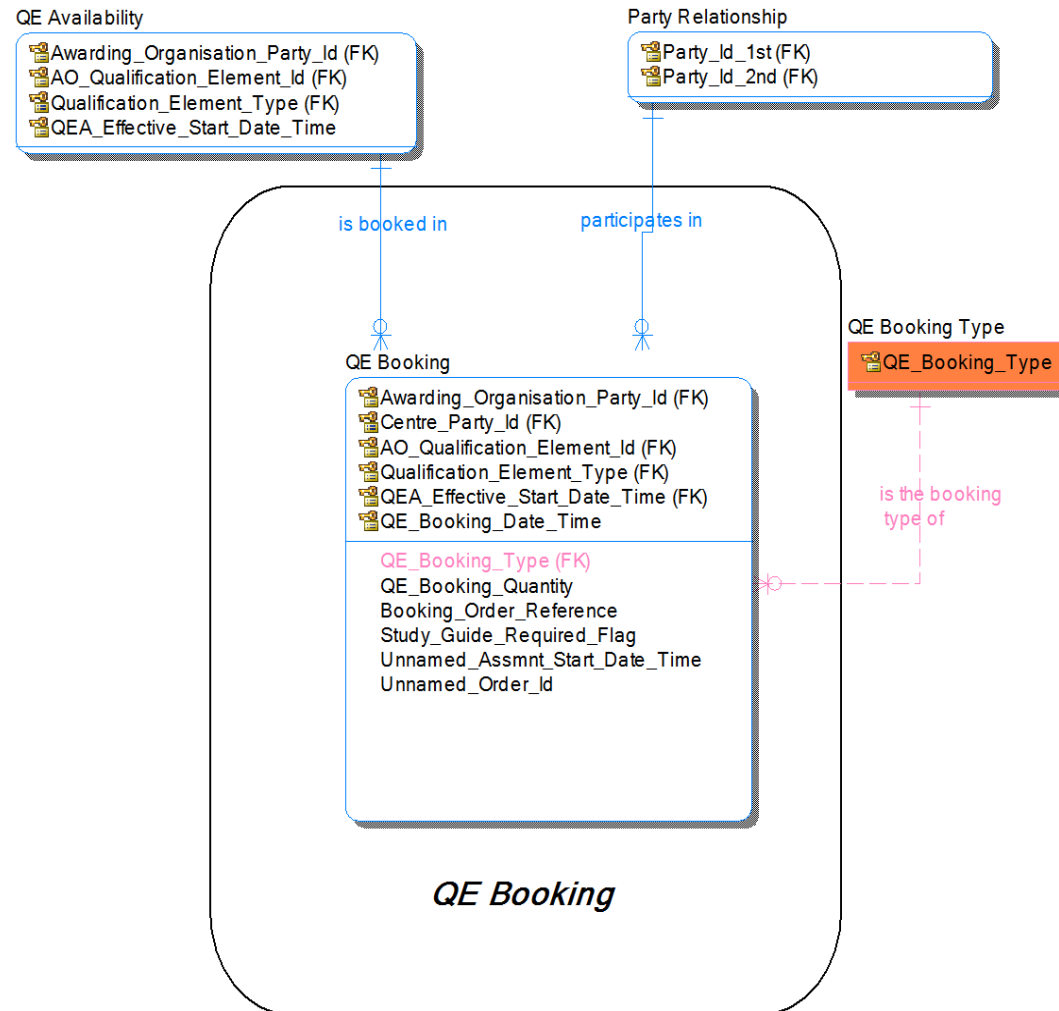
The standards for naming, notation and conventions used for this development can be found in the BDA Data Architecture Modelling Standards document. For convenience, a quick reference of the colours used in these diagrams is shown below.



1.2 Entity Definition Model



1.3 Attribute Model



1.4 Data Definitions

1.4.1 Entity: QE Booking

The BOOKING made by a CENTRE to undertake specific AWARDING ORGANISATION managed ASSESSMENT EVENTS, or to receive certification. The QE BOOKING will always involve an instance of a single higher level QUALIFICATION ELEMENT but may indirectly involve ASSESSMENT EVENTS for one or more lower level QUALIFICATION ELEMENTS.

Attribute Name	Attribute Definition	P K	F K	M	Datatype	FK Source Entity	FK Source Attribute	Controlled List
Awarding_Organisation_Party_Id	A value that denotes and distinguishes the PARTY.	Y	Y	Y	Unicode_String(1,32)	QE Availability	Awarding_Organisation_Party_Id	
Centre_Party_Id	A value that denotes and distinguishes the PARTY.	Y	Y	Y	Unicode_String(1,32)	Party Relationship	Party_Id_2nd	
AO_Qualification_Element_Id ¹	A value that uniquely identifies a specific part of a Qualification and applies to one or more QUALIFICATION ELEMENT(s) within an AWARDING ORGANISATION.	Y	Y	Y	Unicode_String(1,50)	QE Availability	AO_Qualification_Element_Id	

¹ The same value may be used for a number of QUALIFICATION ELEMENTS provided they are differentiated by Qualification_Element_Type.

Attribute Name	Attribute Definition	P K	F K	M	Datatype	FK Source Entity	FK Source Attribute	Controlled List
Qualification_Element_Type	A controlled list of values that denotes the type and behaviour of the specific QUALIFICATION ELEMENT. Values are "Scheme", "Award", "Learning Unit", "Pathway", "Assessable".	Y	Y	Y	Unicode_String(1,32)	QE Availability	Qualification_Element_Type	
QEA_Effective_Start_Date_Time	The effective date and time of the QE AVAILABILITY.	Y	Y	Y	Simple_Date Time	QE Availability	QEA_Effective_Start_Date_Time	
QE_Booking_Date_Time	The specific date and time that the QE BOOKING was created.	Y	N	Y	Simple_Date Time			
QE_Booking_Type	A controlled list of values that identifies the type of QE BOOKING that is being requested. Values include "Entry", "Registration".	N	Y	Y	Unicode_String(1,50)			QE Booking Type
QE_Booking_Quantity	The number of un-named Entries, Registrations or Onscreen Test QE BOOKINGSs requested by the CENTRE.	N	N	N	Simple_Integer(1,5)			

Attribute Name	Attribute Definition	P K	F K	M	Datatype	FK Source Entity	FK Source Attribute	Controlled List
Booking_Order_Reference	The purchase order reference of the CENTRE associated with this QE BOOKING.	N	N	N	Unicode_String(1,32)			
Study_Guide_Required_Flag	Indicates if a LEARNER wants to receive the Study Guide or Qualification book that is available for the selected QUALIFICATION ELEMENT.	N	N	N	Simple_Flag			
Unnamed_Assmnt_Start_Date_Time	The Assessment start date and time for a Test Resource Booking that is not for a specific named LEARNER.	N	N	N	Simple_Date Time			
Unnamed_Order_Id	An identifier to indicate that the QE BOOKING is for a specific quantity of unnamed LEARNERS that will be consumed at a later date by provision of a separate Booking for named LEARNERS.	N	N	N	Unicode_String(1,32)			

2 CHANGES FROM PREVIOUS VERSION

Definition of QE_Booking_Type updated to align example values with related controlled list.

3 REFERENCES

The following references are specific to this Business Data Standard:

- ESCS ISB Business Data Architecture Entity Relationship Diagram, version 9.01
- ESCS ISB, Controlled List, QE Booking Type

The following references apply to all Business Data Standards:

- ESCS ISB Standards Overview and Context
- ESCS ISB Business Data Architecture Data Types
- ESCS ISB BDA Data Architecture Modelling Standards
- ESCS ISB Management Process

4 NOTES

None.

5 COPYRIGHT NOTICE

© [Crown copyright 2015](#)

The Information Standards Board (ISB) is an advisory body to the Department for Education (DfE) and the Department for Business, Innovation and Skills (BIS). The information it produces is subject to Crown copyright, which is administered by the National Archives.

The Crown copyright protected information in this document (other than ISB or Departmental logos) may be reproduced free of charge in any format or medium under the terms of the Open Government Licence, available from the National Archives website.

Any reuse is subject to the material being reproduced accurately and not used in a misleading context. It must be acknowledged as being protected by Crown copyright and the title of the source material must be supplied with the ISB named as the corporate author.

Authorisation to reproduce any information which is identified as being the copyright of a third party must be obtained from the copyright holders concerned.

File: BDS-QE-Booking	Page 11 of 11	Version: 4.0 Status: Approved: Recommended	Issue Date: 27/03/2015 BDA Version: 9.01
----------------------	---------------	---	---