

Party Relationship

Version: 3.0 Issue Date: 27/03/2015

Document Version History

Version	Status	Approval Date	Issue Date	Modified by	Description
1.0	Approved: Recommended	11/06/2013	11/06/2013	ISB	New Standard
2.0	Approved: Recommended	07/04/2014	07/04/2014	ISB	Updated to incorporate attributes for gender and transgender
3.0	Approved: Recommended	24/02/2015	27/03/2015	ISB	Updated to incorporate attribute for religion

Contents

1	<i>Data Standard</i>	3
1.1	Introduction	3
1.1.1	Application	3
1.1.2	Compatibility with non-ISB standards	3
1.1.3	Terminology and notation	4
1.2	Entity Definition Model	5
1.3	Attribute Model	6
1.4	Data Definitions	7
1.4.1	Entity: Party Relationship	7
1.4.2	Associative Entity: PR Person Language	13
2	<i>Changes from previous version</i>	14
3	<i>References</i>	14
4	<i>Notes</i>	15
5	<i>Copyright Notice</i>	16

1 DATA STANDARD

1.1 Introduction

1.1.1 Application

A Party Relationship defines the data held by a Party (the 1st Party) about its relationship to another Party (the 2nd Party).

A Party Relationship may define the effective dates of the relationship pairing where it is valid for two relationships to be processed at a single moment in time across the ESCS enterprise.

A Party Relationship may hold information related to the 2nd Party that is declared within the context of the relationship pairing and that may be different to what is declared in the context of another relationship, for example Ethnicity. The information held in this Relationship record is information that applies to all events based data that is linked to the Party Relationship (as defined in separate Business Data Standards).

Where the 2nd Party is a Person, one or more languages may be related to the Party Relationship.

1.1.2 Compatibility with non-ISB standards

There are no known compatibility issues related to this standard.

1.1.3 Terminology and notation

The following sections contain:

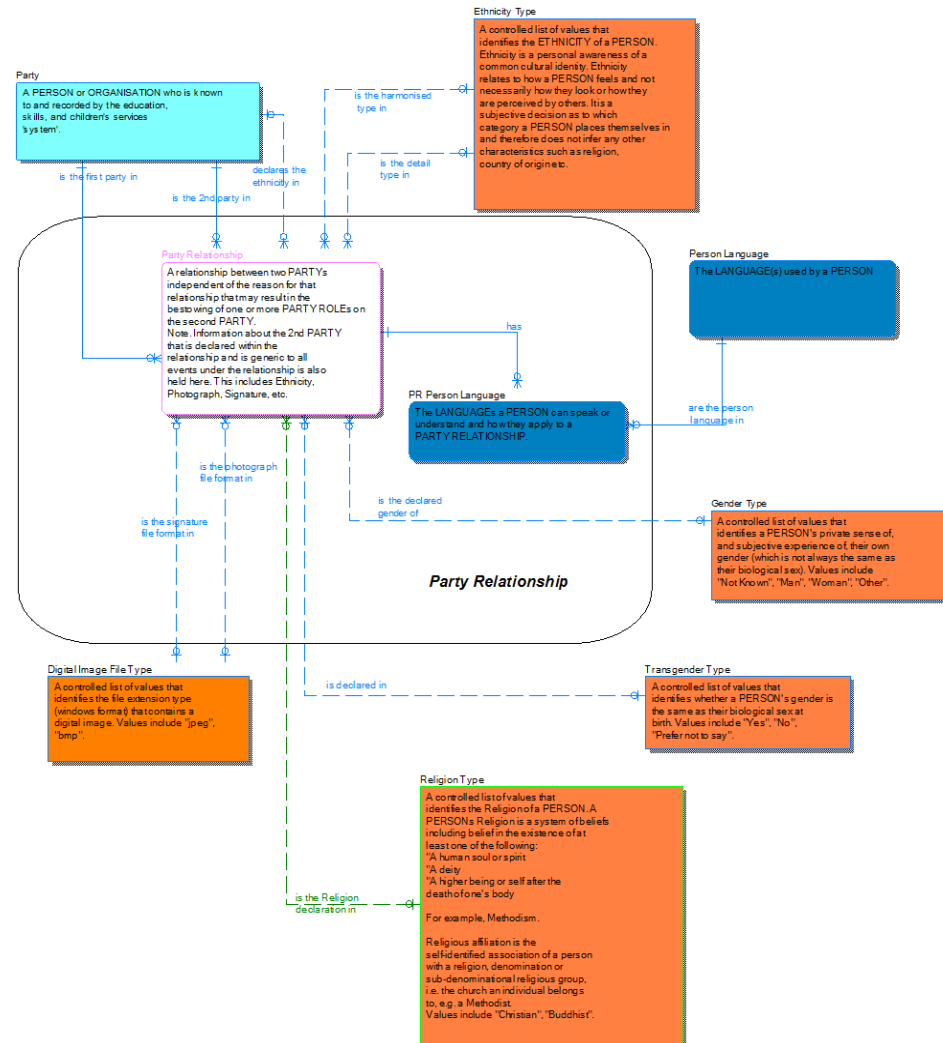
- **Entity Definition Model** – A high level diagram showing: entities; their descriptions and relationships
- **Attribute Model** – A lower level diagram showing the names of attributes making up entities. Attributes in the top section of an entities box are those making up its primary key
- **Data Definitions** – Detailed descriptions of each of the entities at an attribute level, showing attribute: name; definition; whether it is part of a key; whether it is mandatory; its data type and format; parent information and Controlled List association

Only those entities within the boundary square in the diagrams are part of this particular data standard, entities outside the boundary are shown for context purposes only (and can be found within other Business Data Standards), or separate Controlled List reference data.

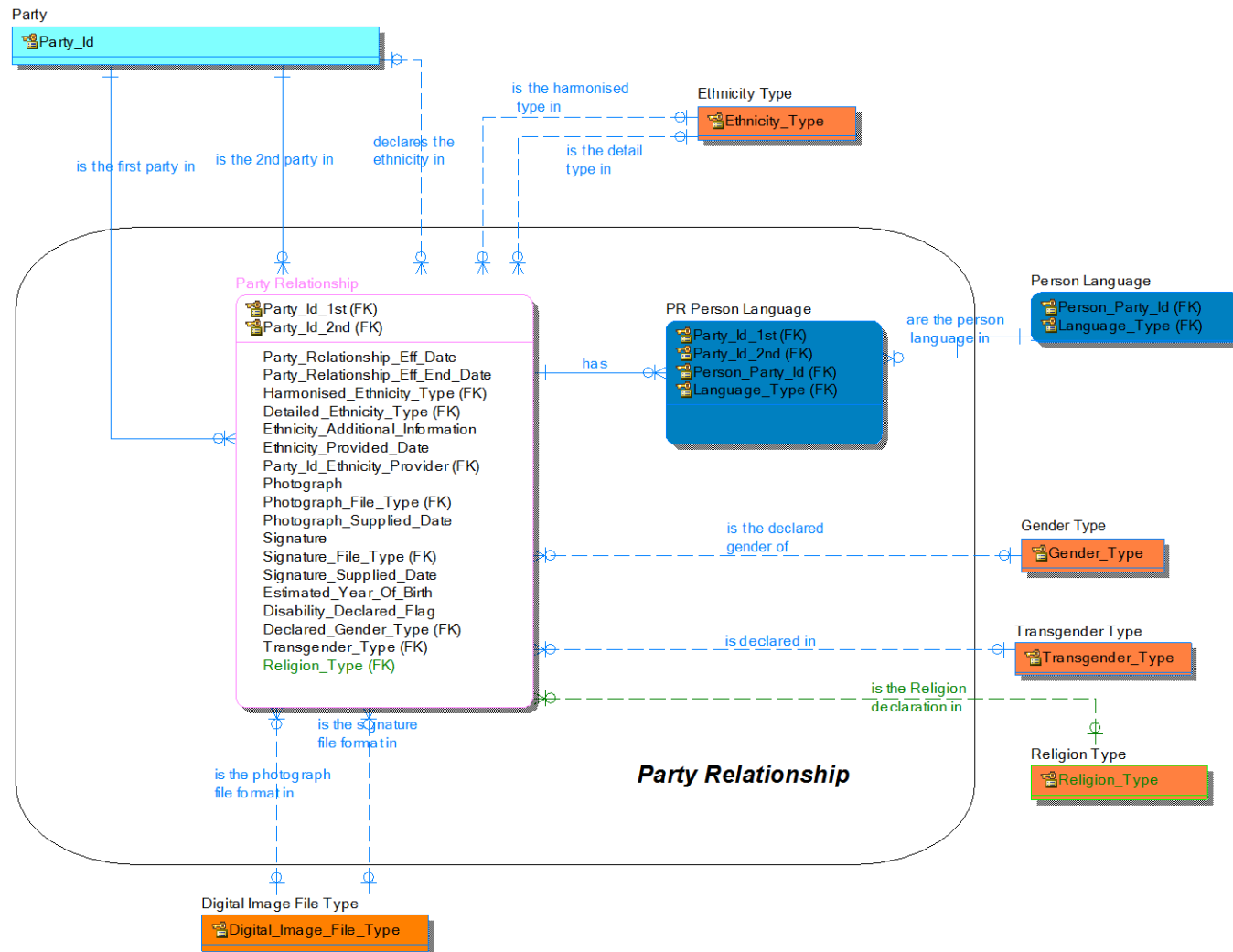
The standards for naming, notation and conventions used for this development can be found in the BDA Data Architecture Modelling Standards document. For convenience, a quick reference of the colours used in these diagrams is shown below.



1.2 Entity Definition Model



1.3 Attribute Model



1.4 Data Definitions

1.4.1 Entity: Party Relationship

A relationship between two PARTYs independent of the reason for that relationship that may result in the bestowing of one or more PARTY ROLES on the second PARTY.

Note. Information about the 2nd PARTY that is declared within the relationship and is generic to all events under the relationship is also held here. This includes Ethnicity, Photograph, Signature, etc.

Attribute Name	Attribute Definition	P K	F K	M	Datatype	FK Source Entity	FK Source Attribute	Controlled List
Party_Id_1st	A value that denotes and distinguishes the PARTY.	Y	Y	Y	Unicode_String(1,32)	Party	Party_Id	
Party_Id_2nd	A value that denotes and distinguishes the PARTY.	Y	Y	Y	Unicode_String(1,32)	Party	Party_Id	
Party_Relationship_Eff_Date	The date from which the PARTY RELATIONSHIP commenced.	N	N	N	Simple_Date Time			
Party_Relationship_Eff_End_Date	The date from which the PARTY RELATIONSHIP ceased.	N	N	N	Simple_Date Time			

Attribute Name	Attribute Definition	P K	F K	M	Datatype	FK Source Entity	FK Source Attribute	Controlled List
Harmonised_Ethnicity_Type ¹	A controlled list of values that identifies the ETHNICITY of a PERSON. Ethnicity is a personal awareness of a common cultural identity. Ethnicity relates to how a PERSON feels and not necessarily how they look or how they are perceived by others. It is a subjective decision as to which category a PERSON places themselves in and therefore does not infer any other characteristics such as religion, country of origin etc.	N	Y	N	Unicode_String(1,100)			Ethnicity Type

¹ This is a subset list of the Office of National Statistics ETHNICITY types and is owned by the ISB.

Attribute Name	Attribute Definition	P K	F K	M	Datatype	FK Source Entity	FK Source Attribute	Controlled List
Detailed_Ethnicity_Type ²	A controlled list of values that identifies the ETHNICITY of a PERSON. Ethnicity is a personal awareness of a common cultural identity. Ethnicity relates to how a PERSON feels and not necessarily how they look or how they are perceived by others. It is a subjective decision as to which category a PERSON places themselves in and therefore does not infer any other characteristics such as religion, country of origin etc.	N	Y	N	Unicode_String(1,100)			Ethnicity Type
Ethnicity_Additional_Information	A free text field that the PERSON providing their ethnicity can add any additional information that they feel will help them express their ethnicity.	N	N	N	Unicode_String(1,200)			

² This is a subset list of the Office of National Statistics ETHNICITY types and is owned by the ISB.

Attribute Name	Attribute Definition	P K	F K	M	Datatype	FK Source Entity	FK Source Attribute	Controlled List
Ethnicity_Provided_Date	The date that the ethnicity information was last provided by the PERSON to the other PARTY in the PARTY RELATIONSHIP.	N	N	N	Simple_Date			
Party_Id_Ethnicity_Provider	A value that denotes and distinguishes the PARTY.	N	Y	N	Unicode_String(1,32)	Party	Party_Id	
Photograph	A digital image of the 2nd PARTY	N	N	N	Simple_Binary(1,40000)			
Photograph_File_Type	Identifies the file extension type (windows format) that contains a digital image such as .jpg ,bmp etc.	N	Y	N	Unicode_String(1,4)			Digital Image File Type
Photograph_Supplied_Date	The date that the currently stored photograph was supplied by the 2nd PARTY.	N	N	N	Simple_Date			
Signature	An image of the hand written signature of the 2nd PARTY.	N	N	N	Simple_Binary(1,40000)			
Signature_File_Type	Identifies the file extension type (windows format) that contains a digital image such as .jpg ,bmp etc.	N	Y	N	Unicode_String(1,4)			Digital Image File Type

Attribute Name	Attribute Definition	P K	F K	M	Datatype	FK Source Entity	FK Source Attribute	Controlled List
Signature_Supplied_Date	The date that the currently stored signature was supplied by the 2nd PARTY.	N	N	N	Simple_Date			
Estimated_Year_of_Birth	The estimated year of birth where the actual date of birth cannot be obtained.	N	N	N	Simple_Integer(4,4)			
Disability_Declared_Flag	A flag that indicates whether the 2nd Party has declared that they are disabled or not.	N	N	N	Simple_Flag			
Declared_Gender_Type	A controlled list of values that identifies a PERSON's private sense of, and subjective experience of, their own gender (which is not always the same as their biological sex). Values include "Not Known", "Man", "Woman", "Other".	N	Y	N	Unicode_String(1,25)			Gender Type
Transgender_Type	A controlled list of values that identifies whether a PERSON's gender is the same as their biological sex at birth. Values include "Yes", "No", "Prefer not to say".	N	Y	N	Unicode_String(1,20)			Transgender Type

Attribute Name	Attribute Definition	P K	F K	M	Datatype	FK Source Entity	FK Source Attribute	Controlled List
Religion_Type ³	<p>A controlled list of values that identifies the Religion of a PERSON. A PERSONs Religion is a system of beliefs including belief in the existence of at least one of the following, "A human soul or spirit", "A deity", "A higher being or self after the death of one's body"</p> <p>For example, Methodism.</p> <p>Religious affiliation is the self-identified association of a person with a religion, denomination or sub-denominational religious group, i.e. the church an individual belongs to, e.g. a Methodist.</p> <p>Values include "Christian", "Buddhist".</p>	N	Y	N	Unicode_String(1,60)			Religion Type

³ Definition and values taken from Cabinet Office Data Standards Working Group - Annexe F - Data Element: Person Religion or Other Belief Affiliation.

1.4.2 Associative Entity: PR Person Language

The LANGUAGEs a PERSON can speak or understand and how they apply to a PARTY RELATIONSHIP.

Attribute Name	Attribute Definition	P K	F K	M	Datatype	FK Source Entity	FK Source Attribute	Controlled List
Party_Id_1st	A value that denotes and distinguishes the PARTY.	Y	Y	Y	Unicode_String(1,32)	Party Relationship	Party_Id_1st	
Party_Id_2nd	A value that denotes and distinguishes the PARTY.	Y	Y	Y	Unicode_String(1,32)	Party Relationship	Party_Id_2nd	
Person_Party_Id	A value that denotes and distinguishes the PARTY.	Y	Y	Y	Unicode_String(1,32)	Person Language	Person_Party_Id	
Language_Type	A controlled list of values that identifies a language.	Y	Y	Y	Unicode_String(1,50)	Person Language	Language_Type	

2 CHANGES FROM PREVIOUS VERSION

Added attribute Religion Type Unicode_String(1,60)

3 REFERENCES

The following references are specific to this Business Data Standard:

- ESCS ISB Business Data Architecture Entity Relationship Diagram, version 9.02
- ESCS ISB, Controlled List, Digital Image File Type
- ESCS ISB, Controlled List, Ethnicity Type
- ESCS ISB, Controlled List, Gender Type
- ESCS ISB, Controlled List, Transgender Type

The following references apply to all Business Data Standards:

- ESCS ISB Standards Overview and Context
- ESCS ISB “System“ Enterprise Architecture - Business Data Architecture
- ESCS ISB Business Data Architecture Data Types
- ESCS ISB BDA Data Architecture Modelling Standards
- ESCS ISB Management Process

4 NOTES

None.

5 COPYRIGHT NOTICE

© [Crown copyright 2015](#)

The Information Standards Board (ISB) is an advisory body to the Department for Education (DfE) and the Department for Business, Innovation and Skills (BIS). The information it produces is subject to Crown copyright, which is administered by the National Archives.

The Crown copyright protected information in this document (other than ISB or Departmental logos) may be reproduced free of charge in any format or medium under the terms of the Open Government Licence, available from the National Archives website.

Any reuse is subject to the material being reproduced accurately and not used in a misleading context. It must be acknowledged as being protected by Crown copyright and the title of the source material must be supplied with the ISB named as the corporate author.

Authorisation to reproduce any information which is identified as being the copyright of a third party must be obtained from the copyright holders concerned.