

Party Relationship Contact

BDA Version: Education, Skills and Children's Services ERD vs 12.4

ISB Number: ISB-000022

Version Number: 4.0

Issue Date: 26/04/2016

Document Version History:

| Version | Status | Approval Date | Issue Date | Modified by | Description |
|---------|--------------------------|---------------|------------|-------------|---|
| 1.0 | Approved: Recommended | 11/06/2013 | 11/06/2013 | ISB | Approved as Recommended Status. |
| 2.0 | Approved: Recommended | 04/08/2014 | 04/08/2014 | ISB | Embedded CL Party Role Type Extracted. |
| 3.0 | Approved: Recommended | 19/08/2015 | 26/10/2015 | ISB | Locator_ID_Contact amended to SimpleString (1,600). |
| 4.0 | Approved: Recommended | 22/03/2016 | 26/04/2016 | ISB | Remove the relationship from Personal Rel Role Name Type to Party Relationship Contact. This will delete the non-identifying attribute Personal_Rel_Role_Name_Type Add non-identifying attribute Contact_Relationship data type Unicode_String(1,100) to Party Relationship Contact. |

Table of Contents

| | |
|---|----|
| The following references apply to all Business Data Standards:..... | 3 |
| Subject Area..... | 4 |
| Party Relationship Contact Entity Def View..... | 5 |
| Entity Definition | 6 |
| Party Relationship Contact Attribute View..... | 7 |
| Attribute Definitions | 8 |
| Attribute ISB Logical Data Types | 11 |
| Changes in this version | 12 |
| Copyright Notice..... | 13 |

The following references apply to all Business Data Standards:

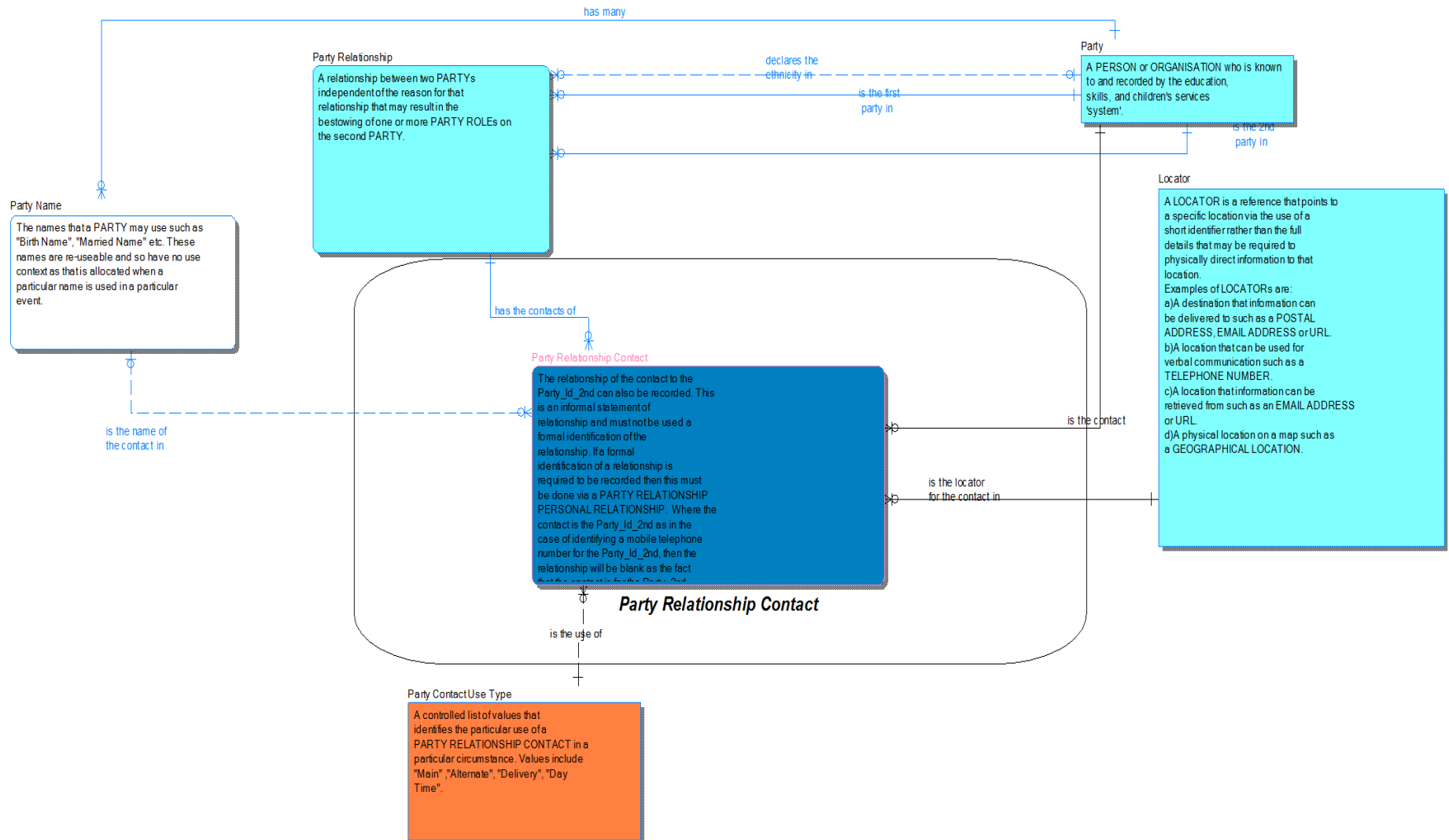
- ESCS ISB Standards Overview and Context
- ESCS ISB "System" Enterprise Architecture - Business Data Architecture
- ESCS ISB Business Data Architecture Data Types
- ESCS ISB BDA Data Architecture Modelling Standards
- ESCS ISB Management Process

Only those entities within the boundary square in the diagrams are part of this particular data standard, entities outside the boundary are shown for context purposes only (and can be found within other Business Data Standards), or separate Controlled List reference data.

Subject Area

| <i>Subject Area Name</i> | <i>Subject Area Definition</i> |
|---------------------------------|--|
| Party Relationship Contact | <p>This standard can be used to store or exchange data that identifies a Party Relationship and the contacts that apply to Party_Id_2nd. The standard includes the Locator for that contact such a tel number, address etc. Where the Locator is for the Party_Id_2nd, eg a Learner at a Learning Provider and the contact details are for the Learner themselves such as their mobile telephone number, then the Party_Id_Contact will be the same value as the Party_Id_2nd, The standard also includes the Party Name for instances where the contact is a third party such as a parent of the Learner.</p> |

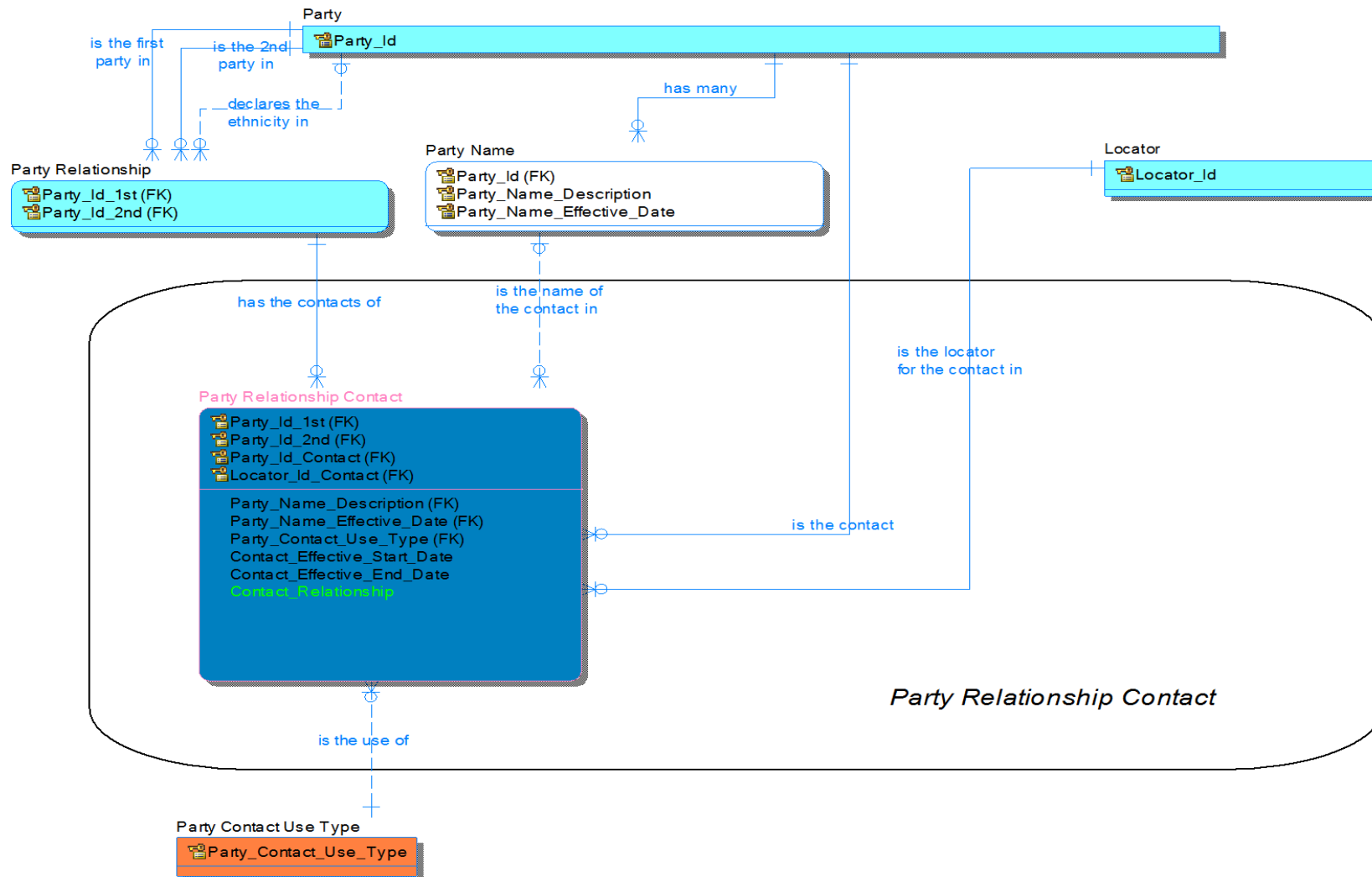
Party Relationship Contact Entity Def View



Entity Definition

| Entity Name | Entity Definition |
|----------------------------|--|
| Party Relationship Contact | The relationship of the contact to the Party_Id_2nd can also be recorded. This is an informal statement of relationship and must not be used a formal identification of the relationship. If a formal identification of a relationship is required to be recorded then this must be done via a PARTY RELATIONSHIP PERSONAL RELATIONSHIP. Where the contact is the Party_Id_2nd as in the case of identifying a mobile telephone number for the Party_Id_2nd, then the relationship will be blank as the fact that the contact is for the Party_2nd can be ascertained by the Party_Id_2nd and the Party_Id_Contact having the same values. |

Party Relationship Contact Attribute View



Attribute Definitions

| Party Relationship Contact | | | | | | | |
|-----------------------------------|---|---------------------------|------------------------|------------------------|---|---|---------------------------|
| <i>Attribute Name</i> | <i>Attribute Definition</i> | <i>Attribute Required</i> | <i>Attribute Is PK</i> | <i>Attribute Is FK</i> | <i>Attribute Note</i> | <i>Attribute History Event Description</i> | <i>Attribute Basename</i> |
| Party_Id_1st | A value that denotes and distinguishes the PARTY. | Yes | Yes | Yes | | Migrated foreign key from Party Relationship. | Party_Id_1st |
| Party_Id_2nd | A value that denotes and distinguishes the PARTY. | Yes | Yes | Yes | This is the Party that the contacts are for | Migrated foreign key from Party Relationship. | Party_Id_2nd |
| Party_Id_Contact | A value that denotes and distinguishes the PARTY. | Yes | Yes | Yes | The Party_Id of the particular contact. Where the contact is for the Party_Id_2nd, eg a Learner at a Learning Provider and the contact details are for the Learner themselves such as their mobile telephone number, then the Party_Id_Contact will be the same value as the Party_Id_2nd | Migrated foreign key from Party. | Party_Id |
| Locator_Id_Contact | A value that denotes and distinguishes the LOCATOR. | Yes | Yes | Yes | The Locator_Id for the Party_Id_Contact such as a telephone number or address. | Migrated foreign key from Locator. | Locator_Id |
| Party_Name_Description | A description that identifies the PARTY NAME such as "Birth", "Preferred", "Known As" etc. It is not a contextual use of the name as that is managed by the PARTY RELATIONSHIP NAME, PARTY NAME USE TYPE. | No | No | Yes | Ideally should be a controlled list that reflects the real types of name such as Birth, Deed Poll, Married etc. but at this time it is not possible to gain that additional information. | Migrated foreign key from Party Name. | Party_Name_Description |
| Party_Name_Effective_Date | The date from which the PARTY NAME | No | No | Yes | | Migrated foreign key from Party Name. | Party_Name_Effective_Date |

| | | | | | | | |
|------------------------------|---|-----|----|-----|--|---|------------------------------|
| ate | commenced. | | | | | | |
| Party_Contact_Use_Type | A controlled list of values that identifies the particular use of a PARTY RELATIONSHIP CONTACT in a particular circumstance. Values include "Main", "Alternate", "Delivery", "Day Time". | Yes | No | Yes | | Migrated foreign key from Party Contact Use Type. | Party_Contact_Use_Type |
| Contact_Effective_Start_Date | The date from which this Party Relationship Contact is effective. | No | No | No | | Created in current model | Contact_Effective_Start_Date |
| Contact_Effective_End_Date | The date from which this Party Relationship Contact ceases to be effective. | No | No | No | | Created in current model | Contact_Effective_End_Date |
| Contact_Relationship | The relationship of the contact to the Party_Id_2nd. This is an informal statement of relationship and must not be used a formal identification of the relationship. If a formal identification of a relationship is required to be recorded then this must be done via a PARTY RELATIONSHIP PERSONAL RELATIONSHIP. Where the contact is the Party_Id_2nd as in the case of identifying a mobile telephone number for the Party_Id_2nd, then the relationship will be blank as the fact that the contact is for the | No | No | No | | Created in current model | Contact_Relationship |

| | | | | | | | |
|--|---|--|--|--|--|--|--|
| | Party_2nd can be ascertained by the Party_Id_2nd and the Party_Id_Contact having the same values. | | | | | | |
|--|---|--|--|--|--|--|--|

| |
|---|
| Attribute ISB Logical Data Types |
|---|

| Entity Name | | |
|----------------------------|------------------------------|----------------------------------|
| Party Relationship Contact | | |
| | Attribute Name | |
| | Party_Id_1st | |
| | | UDP ISB Logical Data Type |
| | | Unicode_String(1,32) |
| | Party_Id_2nd | |
| | | UDP ISB Logical Data Type |
| | | Unicode_String(1,32) |
| | Party_Id_Contact | |
| | | UDP ISB Logical Data Type |
| | | Unicode_String(1,32) |
| | Locator_Id_Contact | |
| | | UDP ISB Logical Data Type |
| | | Simple_String(1,600) |
| | Party_Name_Description | |
| | | UDP ISB Logical Data Type |
| | | Unicode_String(1,50) |
| | Party_Name_Effective_Date | |
| | | UDP ISB Logical Data Type |
| | | Simple_DateTime |
| | Party_Contact_Use_Type | |
| | | UDP ISB Logical Data Type |
| | | Unicode_String(1,50) |
| | Contact_Effective_Start_Date | |
| | | UDP ISB Logical Data Type |
| | | Simple_Date |
| | Contact_Effective_End_Date | |
| | | UDP ISB Logical Data Type |
| | | Simple_Date |

| | | |
|--------------------|----------------------|----------------------------------|
| Entity Name | | |
| | Contact_Relationship | |
| | | UDP ISB Logical Data Type |
| | | Unicode_String(1,50) |

Changes in this version

Remove the relationship from Personal Rel Role Name Type to Party Relationship Contact. This will delete the non-identifying attribute Personal_Rel_Role_Name_Type

Add non-identifying attribute Contact_Relationship data type Unicode_String(1,100) to Party Relationship Contact.

Copyright Notice

© [Crown copyright 2016](#)

The Information Standards Board (ISB) is an advisory body to the Department for Education (DfE) and the Department for Business, Innovation and Skills (BIS). The information it produces is subject to Crown copyright, which is administered by the National Archives.

The Crown copyright protected information in this document (other than ISB or Departmental logos) may be reproduced free of charge in any format or medium under the terms of the Open Government Licence, available from the National Archives website.

Any reuse is subject to the material being reproduced accurately and not used in a misleading context. It must be acknowledged as being protected by Crown copyright and the title of the source material must be supplied with the ISB named as the corporate author.

Authorisation to reproduce any information which is identified as being the copyright of a third party must be obtained from the copyright holders concerned.