

Organisation Post Fulfilment

BDA Version: Education, Skills and Children's Services ERD vs 12

ISB Number: ISB-000016

Version Number: 6.0

Issue Date: 26/04/2016

Document Version History:

Version	Status	Approval Date	Issue Date	Modified by	Description
1.0	Approved: Recommended	25/09/2012	25/09/2012	ISB	
2.0	Approved: Recommended	27/11/2012	27/11/2012	ISB	Updated to include data needed for central collections
3.0	Approved: Recommended	23/07/2013	23/07/2013	ISB	Updated due to a change to the Primary Key of the entity Organisation Post Fulfilment
4.0	Approved: Recommended	04/08/2014	04/08/2014	ISB	Updated in line with safeguarded salary analysis
5.0	Approved: Recommended	19/08/2015	26/10/2015	ISB	Locator_ID_Contact amended to SimpleString (1,600).
6.0	Approved: Recommended	22/03/2016	26/04/2016	ISB	Change of Org_Post_Fulfilment_Status_Type to Org_Post_Fulfil_Status_Type.

Table of Contents

The following references apply to all Business Data Standards:.....	3
Subject Area.....	4
Organisation Post Fulfilment Entity Def View	5
Entity Details	6
Organisation Post Fulfilment Attribute View	7
Attribute Details	8
Attribute ISB Logical Data Types	18
Changes from previous version.....	25
Copyright Notice.....	26

The following references apply to all Business Data Standards:

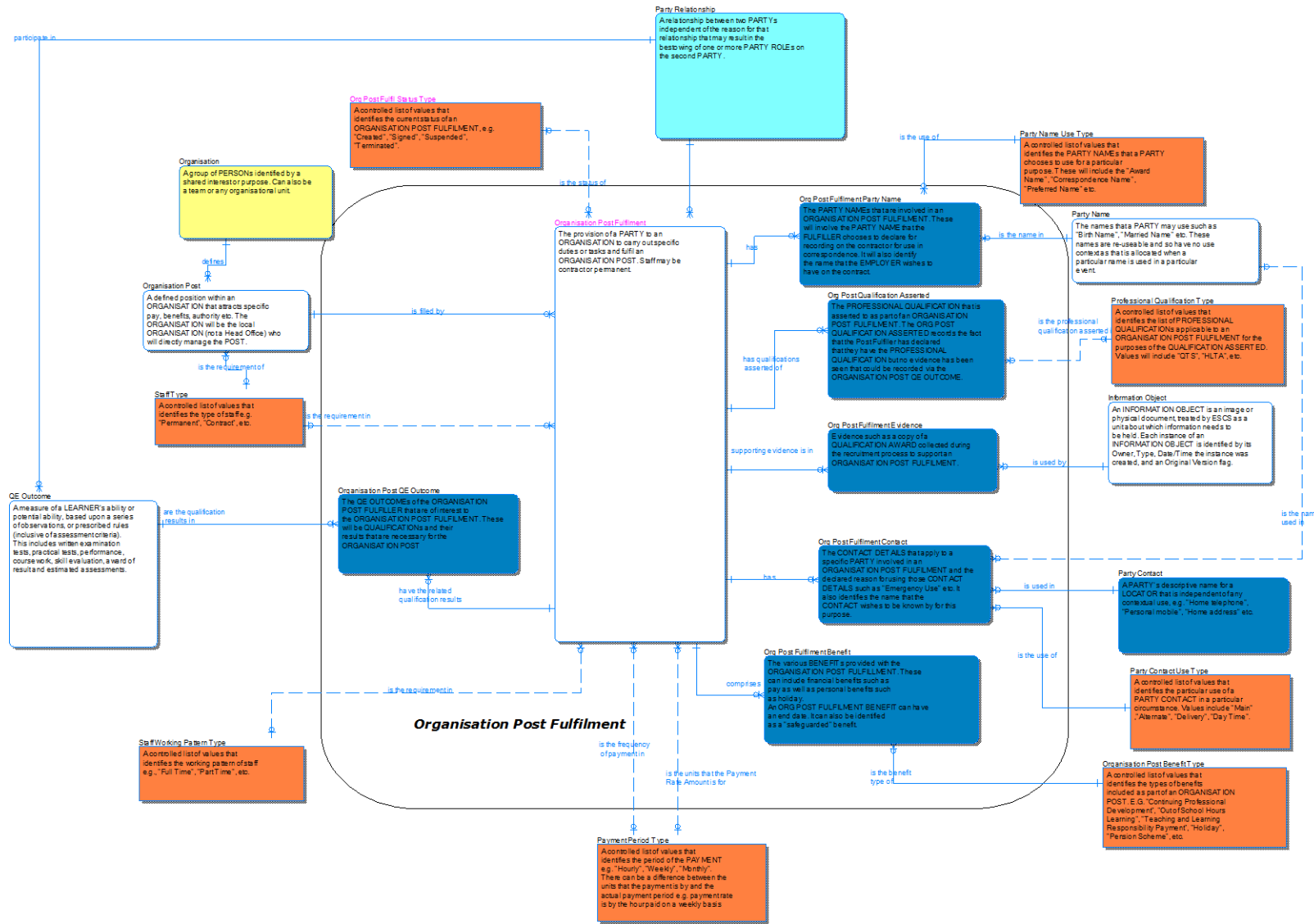
- ESCS ISB Standards Overview and Context
- ESCS ISB "System" Enterprise Architecture - Business Data Architecture
- ESCS ISB Business Data Architecture Data Types
- ESCS ISB BDA Data Architecture Modelling Standards
- ESCS ISB Management Process

Only those entities within the boundary square in the diagrams are part of this particular data standard, entities outside the boundary are shown for context purposes only (and can be found within other Business Data Standards), or separate Controlled List reference data.

Subject Area

<i>Subject Area Name</i>	<i>Subject Area Definition</i>
Organisation Post Fulfilment	This standard can be used to store or exchange data about PARTY that fulfils an ORGANISATION POST to carry out specific duties or tasks. Details of the agreement between the PARTY that fills the post, such as a Teacher, and the EMPLOYER, such as a school, are contained within this standard. This standard covers the data that would be held in a contract of employment

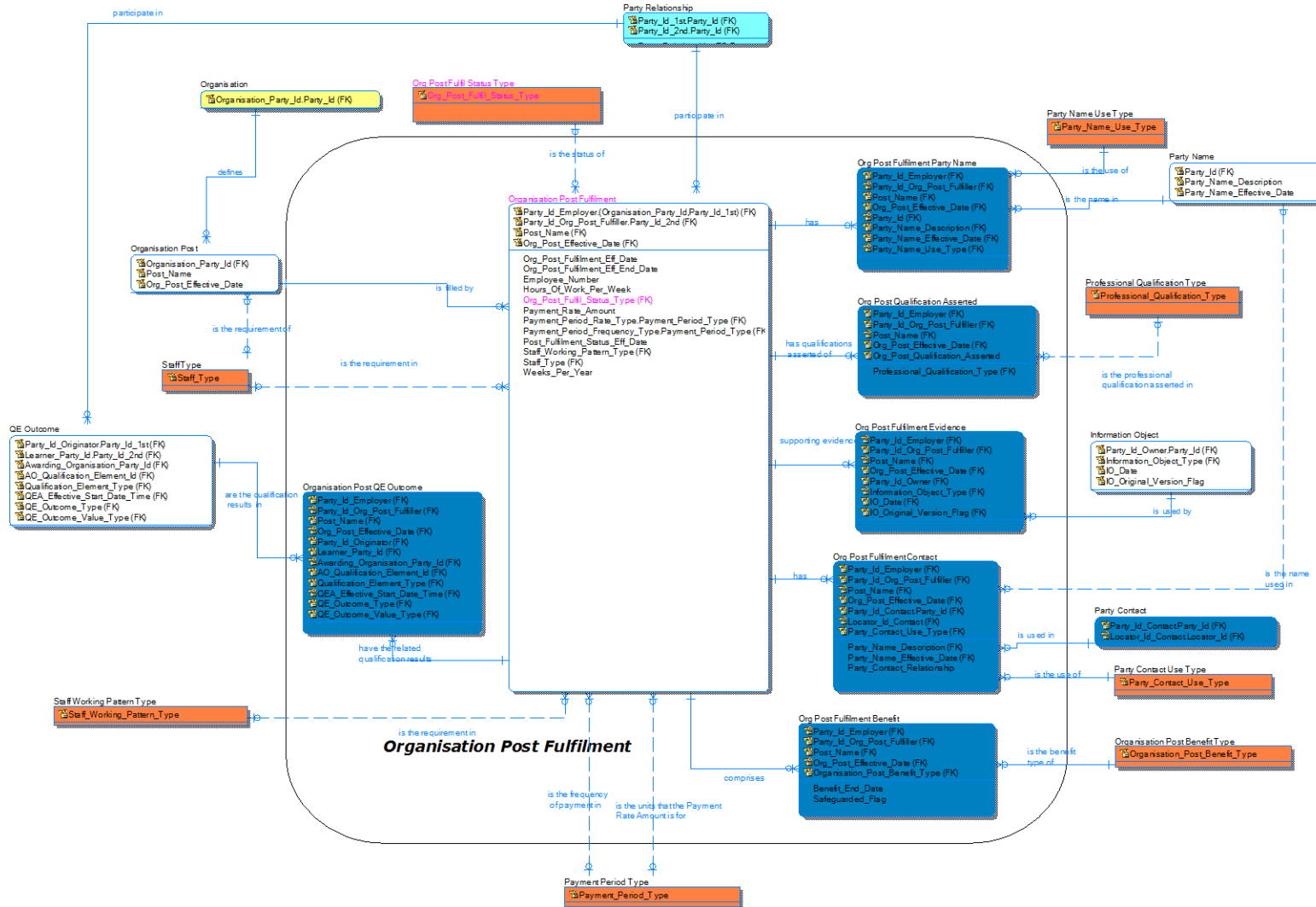
Organisation Post Fulfilment Entity Def View



Entity Details

Entity Name	Entity Definition
Org Post Fulfilment Benefit	The various BENEFITs provided with the ORGANISATION POST FULFILLMENT. These can include financial benefits such as pay as well as personal benefits such as holiday. An ORG POST FULFILMENT BENEFIT can have an end date. It can also be identified as a "safeguarded" benefit.
Org Post Fulfilment Contact	The CONTACT DETAILS that apply to a specific PARTY involved in an ORGANISATION POST FULFILMENT and the declared reason for using those CONTACT DETAILS such as "Emergency Use" etc. It also identifies the name that the CONTACT wishes to be known by for this purpose.
Org Post Fulfilment Evidence	Evidence such as a copy of a QUALIFICATION AWARD collected during the recruitment process to support an ORGANISATION POST FULFILMENT.
Org Post Fulfilment Party Name	The PARTY NAMES that are involved in an ORGANISATION POST FULFILMENT. These will involve the PARTY NAME that the FULFILLER chooses to declare for recording on the contract or for use in correspondence. It will also identify the name that the EMPLOYER wishes to have on the contract.
Org Post Qualification Asserted	The PROFESSIONAL QUALIFICATION that is asserted to as part of an ORGANISATION POST FULFILMENT. The ORG POST QUALIFICATION ASSERTED records the fact that the Post Fulfiller has declared that they have the PROFESSIONAL QUALIFICATION but no evidence has been seen that could be recorded via the ORGANISATION POST QE OUTCOME.
Organisation Post Fulfilment	The provision of a PARTY to an ORGANISATION to carry out specific duties or tasks and fulfil an ORGANISATION POST. Staff may be contract or permanent.
Organisation Post QE Outcome	The QE OUTCOMES of the ORGANISATION POST FULFILLER that are of interest to the ORGANISATION POST FULFILMENT. These will be QUALIFICATIONs and their results that are necessary for the ORGANISATION POST

Organisation Post Fulfilment Attribute View



Attribute Details

Org Post Fulfilment Benefit							
<i>Attribute Name</i>	<i>Attribute Definition</i>	<i>Attribute Required</i>	<i>Attribute Is PK</i>	<i>Attribute Is FK</i>	<i>Attribute Note</i>	<i>Attribute History Event Description</i>	<i>Attribute Basename</i>
Party_Id_Employer	A value that denotes and distinguishes the PARTY.	Yes	Yes	Yes		Migrated foreign key from Organisation Post Fulfilment.	Party_Id_Employer
Party_Id_Org_Post_Fullfiller	A value that denotes and distinguishes the PARTY.	Yes	Yes	Yes		Migrated foreign key from Organisation Post Fulfilment.	Party_Id_Org_Post_Fullfiller
Post_Name	A defined position within an ORGANISATION that attracts specific pay, benefits, authority etc.	Yes	Yes	Yes		Migrated foreign key from Organisation Post Fulfilment.	Post_Name
Org_Post_Effective_Date	The date from which the ORGANISATION POST is effective	Yes	Yes	Yes		Migrated foreign key from Organisation Post Fulfilment.	Org_Post_Effective_Date
Organisation_Post_Benefit_Type	A controlled list of values that identifies the types of benefits included as part of an ORGANISATION POST. E.G. "Continuing Professional Development", "Out of School Hours Learning", "Teaching and Learning Responsibility Payment", "Holiday", "Pension Scheme", etc.	Yes	Yes	Yes		Migrated foreign key from Organisation Post Benefit Type.	Organisation_Post_Benefit_Type
Benefit_End_Date	The end date of an ORG POST FULFILMENT BENEFIT. This is optional and only required if the ORG POST FULFILMENT BENEFIT has a fixed term separate to that of the ORGANISATION POST	No	No	No		Created in current model	Benefit_End_Date

	FULFILMENT end date. For example in the case of a "safeguarded" element.						
Safeguarded_Flag	A flag that indicates that the ORG POST FULFILMENT BENEFIT is a "safeguarded" element.	No	No	No		Created in current model	Safeguarded_Flag
Org Post Fulfilment Contact							
<i>Attribute Name</i>	<i>Attribute Definition</i>	<i>Attribute Required</i>	<i>Attribute Is PK</i>	<i>Attribute Is FK</i>	<i>Attribute Note</i>	<i>Attribute History Event Description</i>	<i>Attribute Basename</i>
Party_Id_Employer	A value that denotes and distinguishes the PARTY.	Yes	Yes	Yes		Migrated foreign key from Organisation Post Fulfilment.	Party_Id_Employer
Party_Id_Org_Post_Fullfiller	A value that denotes and distinguishes the PARTY.	Yes	Yes	Yes		Migrated foreign key from Organisation Post Fulfilment.	Party_Id_Org_Post_Fullfiller
Post_Name	A defined position within an ORGANISATION that attracts specific pay, benefits, authority etc.	Yes	Yes	Yes		Migrated foreign key from Organisation Post Fulfilment.	Post_Name
Org_Post_Effective_Date	The date from which the ORGANISATION POST is effective	Yes	Yes	Yes		Migrated foreign key from Organisation Post Fulfilment.	Org_Post_Effective_Date
Party_Id_Contact	A value that denotes and distinguishes the PARTY	Yes	Yes	Yes		Migrated foreign key from Party Contact.	Party_Id_Contact
Locator_Id_Contact	A value that denotes and distinguishes the LOCATOR.	Yes	Yes	Yes		Migrated foreign key from Party Contact.	Locator_Id_Contact
Party_Contact_Use_Type	A controlled list of values that identifies the particular use of a PARTY CONTACT in a particular circumstance. Values include "Main", "Alternate", "Delivery", "Day Time".	Yes	Yes	Yes		Migrated foreign key from Party Contact Use Type.	Party_Contact_Use_Type
Party_Name_Description	A description that identifies the PARTY	No	No	Yes	Ideally should be a controlled list that	Migrated foreign key from Party Name.	Party_Name_Description

	NAME such as "Birth", "Preferred", "Known As" etc. It is not a contextual use of the name as that is managed by the PARTY RELATIONSHIP NAME, PARTY NAME USE TYPE.				reflects the real types of name such as Birth, Deed Poll, Married etc. but at this time it is not possible to gain that additional information.		
Party_Name_Effective_Date	The date from which the PARTY NAME commenced.	No	No	Yes		Migrated foreign key from Party Name.	Party_Name_Effective_Date
Party_Contact_Relationship	The relationship of the contact to the PARTY in question.	No	No	No		Created in current model	Party_Contact_Relationship
Org Post Fulfillment Evidence							
<i>Attribute Name</i>	<i>Attribute Definition</i>	<i>Attribute Required</i>	<i>Attribute Is PK</i>	<i>Attribute Is FK</i>	<i>Attribute Note</i>	<i>Attribute History Event Description</i>	<i>Attribute Basename</i>
Party_Id_Employer	A value that denotes and distinguishes the PARTY.	Yes	Yes	Yes		Migrated foreign key from Organisation Post Fulfillment.	Party_Id_Employer
Party_Id_Org_Post_Fullfiller	A value that denotes and distinguishes the PARTY.	Yes	Yes	Yes		Migrated foreign key from Organisation Post Fulfillment.	Party_Id_Org_Post_Fullfiller
Post_Name	A defined position within an ORGANISATION that attracts specific pay, benefits, authority etc.	Yes	Yes	Yes		Migrated foreign key from Organisation Post Fulfillment.	Post_Name
Org_Post_Effective_Date	The date from which the ORGANISATION POST is effective	Yes	Yes	Yes		Migrated foreign key from Organisation Post Fulfillment.	Org_Post_Effective_Date
Party_Id_Owner	The identifier that uniquely identifies the PARTY	Yes	Yes	Yes		Migrated foreign key from Information Object.	Party_Id_Owner
Information_Object_Type	A controlled list of values that identifies the INFORMATION OBJECT. Values include "Bank Statement", "Reference", "Passport", "Letter of Confirmation",	Yes	Yes	Yes		Migrated foreign key from Information Object.	Information_Object_Type

	"Accounts", "Adoption Certificate", "Birth Certificate", "Work Permit"						
IO_Date	The Date/Time the current version of the INFORMATION OBJECT was created	Yes	Yes	Yes		Migrated foreign key from Information Object.	IO_Date
IO_Original_Version_Flag	A flag that identifies if the INFORMATION OBJECT is the original (Y) or a copy(N)	Yes	Yes	Yes		Migrated foreign key from Information Object.	IO_Original_Version_Flag
Org Post Fulfilment Party Name							
<i>Attribute Name</i>	<i>Attribute Definition</i>	<i>Attribute Required</i>	<i>Attribute Is PK</i>	<i>Attribute Is FK</i>	<i>Attribute Note</i>	<i>Attribute History Event Description</i>	<i>Attribute Basename</i>
Party_Id_Employer	A value that denotes and distinguishes the PARTY.	Yes	Yes	Yes		Migrated foreign key from Organisation Post Fulfilment.	Party_Id_Employer
Party_Id_Org_Post_Fullfiller	A value that denotes and distinguishes the PARTY.	Yes	Yes	Yes		Migrated foreign key from Organisation Post Fulfilment.	Party_Id_Org_Post_Fullfiller
Post_Name	A defined position within an ORGANISATION that attracts specific pay, benefits, authority etc.	Yes	Yes	Yes		Migrated foreign key from Organisation Post Fulfilment.	Post_Name
Org_Post_Effective_Date	The date from which the ORGANISATION POST is effective	Yes	Yes	Yes		Migrated foreign key from Organisation Post Fulfilment.	Org_Post_Effective_Date
Party_Id	A value that denotes and distinguishes the PARTY.	Yes	Yes	Yes		Migrated foreign key from Party Name.	Party_Id
Party_Name_Description	A description that identifies the PARTY NAME such as "Birth", "Preferred", "Known As" etc. It is not a contextual use of the name as that is managed by the PARTY RELATIONSHIP NAME, PARTY NAME USE TYPE.	Yes	Yes	Yes	Ideally should be a controlled list that reflects the real types of name such as Birth, Deed Poll, Married etc. but at this time it is not possible to gain that additional information.	Migrated foreign key from Party Name.	Party_Name_Description

Party_Name_Effective_Date	The date from which the PARTY NAME commenced.	Yes	Yes	Yes		Migrated foreign key from Party Name.	Party_Name_Effective_Date
Party_Name_Use_Type	A controlled list of values that identifies the PARTY NAMEs that a PARTY chooses to use for a particular purpose. These will include the "Award Name", "Correspondence Name", "Preferred Name" etc.	Yes	Yes	Yes		Migrated foreign key from Party Name Use Type.	Party_Name_Use_Type
Org Post Qualification Asserted							
<i>Attribute Name</i>	<i>Attribute Definition</i>	<i>Attribute Required</i>	<i>Attribute Is PK</i>	<i>Attribute Is FK</i>	<i>Attribute Note</i>	<i>Attribute History Event Description</i>	<i>Attribute Basename</i>
Party_Id_Employer	A value that denotes and distinguishes the PARTY.	Yes	Yes	Yes		Migrated foreign key from Organisation Post Fulfilment.	Party_Id_Employer
Party_Id_Org_Post_Fullfiller	A value that denotes and distinguishes the PARTY.	Yes	Yes	Yes		Migrated foreign key from Organisation Post Fulfilment.	Party_Id_Org_Post_Fullfiller
Post_Name	A defined position within an ORGANISATION that attracts specific pay, benefits, authority etc.	Yes	Yes	Yes		Migrated foreign key from Organisation Post Fulfilment.	Post_Name
Org_Post_Effective_Date	The date from which the ORGANISATION POST is effective	Yes	Yes	Yes		Migrated foreign key from Organisation Post Fulfilment.	Org_Post_Effective_Date
Org_Post_Qualification_Asserted	A professional qualification asserted to by the applicant on a ORGANISATION POST FULLFILMENT. This is not a controlled list as the number and name of professional qualifications is very diverse.	Yes	Yes	No		Created in current model	Org_Post_Qualification_Asserted
Professional_Qualification_Type	A controlled list of values that identifies the list of	No	No	Yes	This is not part of the identifier of ORG	Migrated foreign key from Professional	Professional_Qualification_Type

ype	PROFESSIONAL QUALIFICATIONS applicable to an ORGANISATION POST FULFILMENT for the purposes of the QUALIFICATION ASSERTED. Values will include "QTS", "HLTA", etc.				POST QUALIFICATION ASSERTED as it is not possible to define and be the master source of a list of all the professional qualification types. Only certain types such as QTS need to be identified specifically.	Qualification Type.	
Organisation Post Fulfilment							
<i>Attribute Name</i>	<i>Attribute Definition</i>	<i>Attribute Required</i>	<i>Attribute Is PK</i>	<i>Attribute Is FK</i>	<i>Attribute Note</i>	<i>Attribute History Event Description</i>	<i>Attribute Basename</i>
Party_Id_Employer	A value that denotes and distinguishes the PARTY.	Yes	Yes	Yes		Migrated foreign key from Organisation Post.	Organisation_Party_Id
Party_Id_Org_Post_Fullfiller	A value that denotes and distinguishes the PARTY.	Yes	Yes	Yes		Migrated foreign key from Party Relationship.	Party_Id_2nd
Post_Name	A defined position within an ORGANISATION that attracts specific pay, benefits, authority etc.	Yes	Yes	Yes		Migrated foreign key from Organisation Post.	Post_Name
Org_Post_Effective_Date	The date from which the ORGANISATION POST is effective	Yes	Yes	Yes		Migrated foreign key from Organisation Post.	Org_Post_Effective_Date
Org_Post_Fulfilment_Eff_Date	The effective date of this ORGANISATION POST FULFILMENT.	No	No	No		Created in current model	Org_Post_Fulfilment_Eff_Date
Org_Post_Fulfilment_Eff_End_Date	The date from which this ORGANISATION POST FULFILMENT ceased to be effective	No	No	No		Created in current model	Org_Post_Fulfilment_Eff_End_Date
Employee_Number	The internal reference given to an employee when they are approved for a POST. Usually a number that is then used	No	No	No		Created in current model	Employee_Number

	on payslips etc.						
Hours_Of_Work_Per_Week	The contracted number of hours per week	No	No	No		Created in current model	Hours_Of_Work_Per_Week
Org_Post_Fulfil_Status_Type	A controlled list of values that identifies the current status of an ORGANISATION POST FULFILMENT, e.g. "Created", "Signed", "Suspended", "Terminated".	No	No	Yes		Migrated foreign key from Org Post Fulfilment Status Type.	Org_Post_Fulfil_Status_Type
Payment_Rate_Amount	The amount of standard remuneration for the STAFF PROVISION for the period as defined by the Payment_Period_Rate_Type.	No	No	No	For permanent contract (Staff_Type = "Permanent") Contract total Pay will be annual salary (Payment_Rate_Amount x Payment_Period_Rate_Type for 12 months). For a temporary contract (Staff_Type = "Contract") Contract total Pay will be (Payment_Rate_Amount x Payment_Period_Rate_Type for period of Org_Post_Fulfilment_Eff_Date to Org_Post_Fulfilment_Eff_End_Date)	Created in current model	Payment_Rate_Amount
Payment_Period_Rate_Type	A controlled list of values that identifies the period of the PAYMENT e.g. "Hourly", "Weekly", "Monthly". There can be a difference between the units that the payment is	No	No	Yes		Migrated foreign key from Payment Period Type.	Payment_Period_Type

	by and the actual payment period e.g. payment rate is by the hour paid on a weekly basis						
Payment_Period_Frequency_Type	A controlled list of values that identifies the period of the PAYMENT e.g. "Hourly", "Weekly", "Monthly". There can be a difference between the units that the payment is by and the actual payment period e.g. payment rate is by the hour paid on a weekly basis	No	No	Yes	Period of the PAYMENT e.g. hourly, weekly, monthly. There can be a difference between the units that the payment is by and the actual payment period e.g. payment rate is by the hour paid on a weekly basis	Migrated foreign key from Payment Period Type.	Payment_Period_Type
Post_Fulfilment_Status_Eff_Date	The effective date and time that the current ORG POST FULFILMENT STATUS TYPE became effective	No	No	No		Created in current model	Post_Fulfilment_Status_Eff_Date
Staff_Working_Pattern_Type	A controlled list of values that identifies the working pattern of staff e.g., "Full Time", "Part Time", etc.	No	No	Yes		Migrated foreign key from Staff Working Pattern Type.	Staff_Working_Pattern_Type
Staff_Type	A controlled list of values that identifies the type of staff e.g. "Permanent", "Contract", etc.	No	No	Yes		Migrated foreign key from Staff Type.	Staff_Type
Weeks_Per_Year	The number of weeks per year that the ORGANISATION POST FULFILMENT is applicable for	No	No	No		Created in current model	Weeks_Per_Year
Organisation Post QE Outcome							
<i>Attribute Name</i>	<i>Attribute Definition</i>	<i>Attribute Required</i>	<i>Attribute Is PK</i>	<i>Attribute Is FK</i>	<i>Attribute Note</i>	<i>Attribute History Event Description</i>	<i>Attribute Basename</i>
Party_Id_Employer	A value that denotes and distinguishes the PARTY.	Yes	Yes	Yes		Migrated foreign key from Organisation	Party_Id_Employer

						Post Fulfilment.	
Party_Id_Org_Post_Fulfiller	A value that denotes and distinguishes the PARTY.	Yes	Yes	Yes		Migrated foreign key from Organisation Post Fulfilment.	Party_Id_Org_Post_Ful filler
Post_Name	A defined position within an ORGANISATION that attracts specific pay, benefits, authority etc.	Yes	Yes	Yes		Migrated foreign key from Organisation Post Fulfilment.	Post_Name
Org_Post_Effective_Date	The date from which the ORGANISATION POST is effective	Yes	Yes	Yes		Migrated foreign key from Organisation Post Fulfilment.	Org_Post_Effective_Date
Party_Id_Originator	A value that denotes and distinguishes the PARTY.	Yes	Yes	Yes		Migrated foreign key from QE Outcome.	Party_Id_Originator
Learner_Party_Id	A value that denotes and distinguishes the PARTY.	Yes	Yes	Yes		Migrated foreign key from QE Outcome.	Learner_Party_Id
Awarding_Organisation_Party_Id	A value that denotes and distinguishes the PARTY.	Yes	Yes	Yes		Migrated foreign key from QE Outcome.	Awarding_Organisation_Party_Id
AO_Qualification_Element_Id	A value that uniquely identifies a specific part of a Qualification and applies to one or more QUALIFICATION ELEMENT(s) within an AWARDING ORGANISATION.	Yes	Yes	Yes	The same value may be used for a number of QUALIFICATION ELEMENTS provided they are differentiated by Qualification_Element_Type.	Migrated foreign key from QE Outcome.	AO_Qualification_Element_Id
Qualification_Element_Type	A controlled list of values that denotes the type and behaviour of the specific QUALIFICATION ELEMENT. Values are "Scheme", "Award", "Learning Unit", "Pathway", "Assessable".	Yes	Yes	Yes		Migrated foreign key from QE Outcome.	Qualification_Element_Type
QEA_Effective_Start_Date_Time	The effective date and time of the QE AVAILABILITY.	Yes	Yes	Yes		Migrated foreign key from QE Outcome.	QEA_Effective_Start_Date_Time
QE_Outcome_Type	A controlled list of values that identifies the specific type of achievement (QE	Yes	Yes	Yes		Migrated foreign key from QE Outcome.	QE_Outcome_Type

	OUTCOME). Values include "Centre Assessed Outcome", "Estimated Grade", "Result", "Interim claim".						
QE_Outcome_Value_Type	A controlled list of values that identifies the category of a value supplied within a QE OUTCOME. There can be more than one category for the same QE OUTCOME such as RAW mark and UMS mark. Values are "Banded Score", "Raw Mark", "Points", "Credits", "Uniform Mark Scale", "Percentage Uniform Mark Scale", "Scaled Mark", "Grade".	Yes	Yes	Yes		Migrated foreign key from QE Outcome.	QE_Outcome_Value_Type

Attribute ISB Logical Data Types

Entity Name		
Org Post Fulfilment Benefit		
	Attribute Name	
	Party_Id_Employer	
		UDP ISB Logical Data Type
		Unicode_String(1,32)
	Party_Id_Org_Post_Fullfiller	
		UDP ISB Logical Data Type
		Unicode_String(1,32)
	Post_Name	
		UDP ISB Logical Data Type
		Unicode_String(1,100)
	Org_Post_Effective_Date	
		UDP ISB Logical Data Type
		Simple_DateTime
	Organisation_Post_Benefit_Type	
		UDP ISB Logical Data Type
		Unicode_String(1,80)
	Benefit_End_Date	
		UDP ISB Logical Data Type
		Simple_Date
	Safeguarded_Flag	
		UDP ISB Logical Data Type
		Simple_Flag
Org Post Fulfilment Contact		
	Attribute Name	
	Party_Id_Employer	
		UDP ISB Logical Data Type
		Unicode_String(1,32)
	Party_Id_Org_Post_Fullfiller	

		UDP ISB Logical Data Type
		Unicode_String(1,32)
	Post_Name	
		UDP ISB Logical Data Type
		Unicode_String(1,100)
	Org_Post_Effective_Date	
		UDP ISB Logical Data Type
		Simple_DateTime
	Party_Id_Contact	
		UDP ISB Logical Data Type
		Unicode_String(1,32)
	Locator_Id_Contact	
		UDP ISB Logical Data Type
		Simple_String(1,600)
	Party_Contact_Use_Type	
		UDP ISB Logical Data Type
		Unicode_String(1,50)
	Party_Name_Description	
		UDP ISB Logical Data Type
		Unicode_String(1,50)
	Party_Name_Effective_Date	
		UDP ISB Logical Data Type
		Simple_DateTime
	Party_Contact_Relationship	
		UDP ISB Logical Data Type
		Unicode_String(1,50)
Org Post Fulfilment Evidence		
	Attribute Name	
	Party_Id_Employer	
		UDP ISB Logical Data Type
		Unicode_String(1,32)
	Party_Id_Org_Post_Fullfiller	
		UDP ISB Logical Data Type

Entity Name		
		Unicode_String(1,32)
	Post_Name	
		UDP ISB Logical Data Type
		Unicode_String(1,100)
	Org_Post_Effective_Date	
		UDP ISB Logical Data Type
		Simple_DateTime
	Party_Id_Owner	
		UDP ISB Logical Data Type
		Unicode_String(1,32)
	Information_Object_Type	
		UDP ISB Logical Data Type
		Unicode_String(1,50)
	IO_Date	
		UDP ISB Logical Data Type
		Simple_DateTime
	IO_Original_Version_Flag	
		UDP ISB Logical Data Type
		Simple_Flag
Org Post Fulfilment Party Name		
	Attribute Name	
	Party_Id_Employer	
		UDP ISB Logical Data Type
		Unicode_String(1,32)
	Party_Id_Org_Post_Fullfiller	
		UDP ISB Logical Data Type
		Unicode_String(1,32)
	Post_Name	
		UDP ISB Logical Data Type
		Unicode_String(1,100)
	Org_Post_Effective_Date	
		UDP ISB Logical Data Type

Entity Name		
		Simple_DateTime
	Party_Id	
		UDP ISB Logical Data Type
		Unicode_String(1,32)
	Party_Name_Description	
		UDP ISB Logical Data Type
		Unicode_String(1,50)
	Party_Name_Effective_Date	
		UDP ISB Logical Data Type
		Simple_DateTime
	Party_Name_Use_Type	
		UDP ISB Logical Data Type
		Unicode_String(1,32)
Org Post Qualification Asserted		
	Attribute Name	
	Party_Id_Employer	
		UDP ISB Logical Data Type
		Unicode_String(1,32)
	Party_Id_Org_Post_Fullfiller	
		UDP ISB Logical Data Type
		Unicode_String(1,32)
	Post_Name	
		UDP ISB Logical Data Type
		Unicode_String(1,100)
	Org_Post_Effective_Date	
		UDP ISB Logical Data Type
		Simple_DateTime
	Org_Post_Qualification_Asserted	
		UDP ISB Logical Data Type
		Unicode_String(1,32)
	Professional_Qualification_Type	
		UDP ISB Logical Data Type

Entity Name		
		Unicode_String(1,32)
Organisation Post Fulfilment		
	Attribute Name	
	Party_Id_Employer	
		UDP ISB Logical Data Type
		Unicode_String(1,32)
	Party_Id_Org_Post_Fullfiller	
		UDP ISB Logical Data Type
		Unicode_String(1,32)
	Post_Name	
		UDP ISB Logical Data Type
		Unicode_String(1,100)
	Org_Post_Effective_Date	
		UDP ISB Logical Data Type
		Simple_DateTime
	Org_Post_Fulfilment_Eff_Date	
		UDP ISB Logical Data Type
		Simple_Date
	Org_Post_Fulfilment_Eff_End_Date	
		UDP ISB Logical Data Type
		Simple_Date
	Employee_Number	
		UDP ISB Logical Data Type
		Unicode_String(1,30)
	Hours_Of_Work_Per_Week	
		UDP ISB Logical Data Type
		Simple_Decimal(4,2)
	Org_Post_Fulfil_Status_Type	
		UDP ISB Logical Data Type
		Unicode_String(1,32)
	Payment_Rate_Amount	
		UDP ISB Logical Data Type

Entity Name		
		Simple_Decimal(9,2)
	Payment_Period_Rate_Type	
		UDP ISB Logical Data Type
		Unicode_String(1,32)
	Payment_Period_Frequency_Type	
		UDP ISB Logical Data Type
		Unicode_String(1,32)
	Post_Fulfilment_Status_Eff_Date	
		UDP ISB Logical Data Type
		Simple_DateTime
	Staff_Working_Pattern_Type	
		UDP ISB Logical Data Type
		Unicode_String(1,32)
	Staff_Type	
		UDP ISB Logical Data Type
		Unicode_String(1,32)
	Weeks_Per_Year	
		UDP ISB Logical Data Type
		Simple_Integer(1,2)
Organisation Post QE Outcome		
	Attribute Name	
	Party_Id_Employer	
		UDP ISB Logical Data Type
		Unicode_String(1,32)
	Party_Id_Org_Post_Fullfiller	
		UDP ISB Logical Data Type
		Unicode_String(1,32)
	Post_Name	
		UDP ISB Logical Data Type
		Unicode_String(1,100)
	Org_Post_Effective_Date	
		UDP ISB Logical Data Type

Entity Name		
		Simple_DateTime
	Party_Id_Originator	
		UDP ISB Logical Data Type
		Unicode_String(1,32)
	Learner_Party_Id	
		UDP ISB Logical Data Type
		Unicode_String(1,32)
	Awarding_Organisation_Party_Id	
		UDP ISB Logical Data Type
		Unicode_String(1,32)
	AO_Qualification_Element_Id	
		UDP ISB Logical Data Type
		Unicode_String(1,50)
	Qualification_Element_Type	
		UDP ISB Logical Data Type
		Unicode_String(1,32)
	QEA_Effective_Start_Date_Time	
		UDP ISB Logical Data Type
		Simple_DateTime
	QE_Outcome_Type	
		UDP ISB Logical Data Type
		Unicode_String(1,50)
	QE_Outcome_Value_Type	
		UDP ISB Logical Data Type
		Unicode_String(1,32)

Changes from previous version

Change of Org_Post_Fulfilment_Status_Type to Org_Post_Fulfil_Status_Type due to attribute name being longer than 30 characters.

Copyright Notice

© [Crown copyright 2016](#)

The Information Standards Board (ISB) is an advisory body to the Department for Education (DfE) and the Department for Business, Innovation and Skills (BIS). The information it produces is subject to Crown copyright, which is administered by the National Archives.

The Crown copyright protected information in this document (other than ISB or Departmental logos) may be reproduced free of charge in any format or medium under the terms of the Open Government Licence, available from the National Archives website.

Any reuse is subject to the material being reproduced accurately and not used in a misleading context. It must be acknowledged as being protected by Crown copyright and the title of the source material must be supplied with the ISB named as the corporate author.

Authorisation to reproduce any information which is identified as being the copyright of a third party must be obtained from the copyright holders concerned.