

Locator Geographical Unit

Version: 3.0 **Issue Date:** 26/10/2015

Document Version History

Version	Status	Approval Date	Issue Date	Modified by	Description
1.0	Approved: Recommended	04/03/2014	07/04/2014	ISB	New Standard
2.0	Approved: Recommended	18/11/2014	08/12/2014	ISB	Renamed from Locator Geographical Admin Unit to Locator Geographical Unit. Geographical_Unit_Name increased from Unicode_String(1,50) to Unicode_String(1,100).
3.0	Approved: Recommended	19/08/2015	26/10/2015	ISB	Locator_Id updated to Simple_String(1,600).

Contents

1	<i>Data Standard</i>	3
1.1	Introduction	3
1.1.1	Application	3
1.1.2	Compatibility with non-ISB standards	3
1.1.3	Terminology and notation	4
1.2	Entity Definition Model	5
1.3	Attribute Model	6
1.4	Data Definitions	7
1.4.1	Entity: Locator Geographical Unit	7
2	<i>Changes from previous version</i>	8
3	<i>References</i>	8
4	<i>Notes</i>	8
5	<i>Copyright Notice</i>	9

1 DATA STANDARD

1.1 Introduction

1.1.1 Application

This standard can be used to exchange data describing the deliverables produced as a result of delivery of a **Locator Geographical Unit**, where:

LOCATOR GEOGRAPHICAL UNIT identifies the particular GEOGRAPHICAL UNIT(s) that a LOCATOR such as POSTAL ADDRESS is contained within.

The LOCATOR GEOGRAPHICAL UNIT is linked to the LOCATOR super type as it can apply to multiple LOCATOR sub types. Currently the sub types that can be linked to a LOCATOR GEOGRAPHICAL UNIT are POSTAL ADDRESS and GEOGRAPHICAL LOCATION.

1.1.2 Compatibility with non-ISB standards

There are no known compatibility issues related to this standard.

1.1.3 Terminology and notation

The following sections contain:

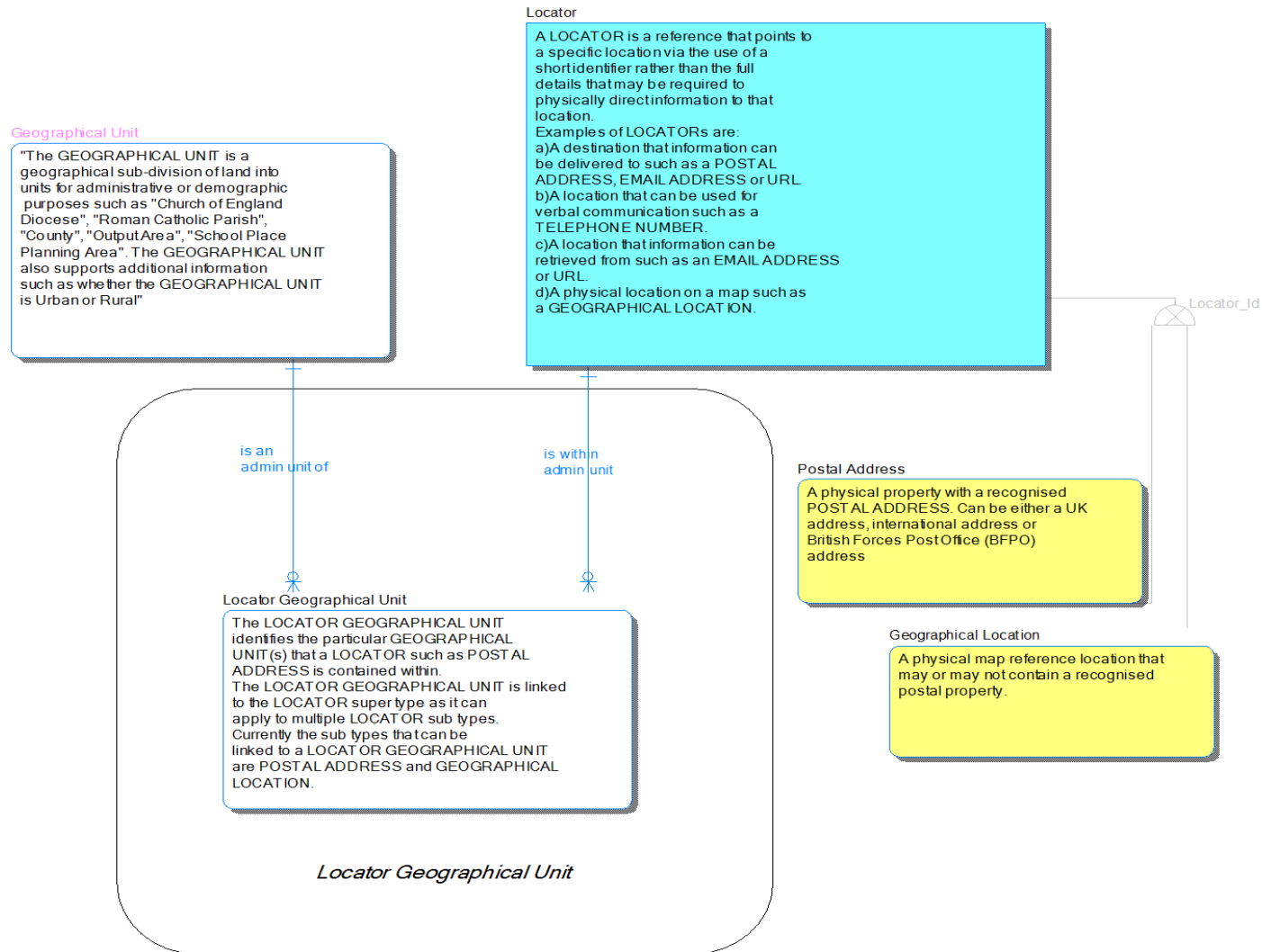
- **Entity Definition Model** – A high level diagram showing: entities; their descriptions and relationships
- **Attribute Model** – A lower level diagram showing the names of attributes making up entities. Attributes in the top section of an entities box are those making up its primary key
- **Data Definitions** – Detailed descriptions of each of the entities at an attribute level, showing attribute: name; definition; whether it is part of a key; whether it is mandatory; its data type and format; parent information and Controlled List association

Only those entities within the boundary square in the diagrams are part of this particular data standard, entities outside the boundary are shown for context purposes only (and can be found within other Business Data Standards), or separate Controlled List reference data.

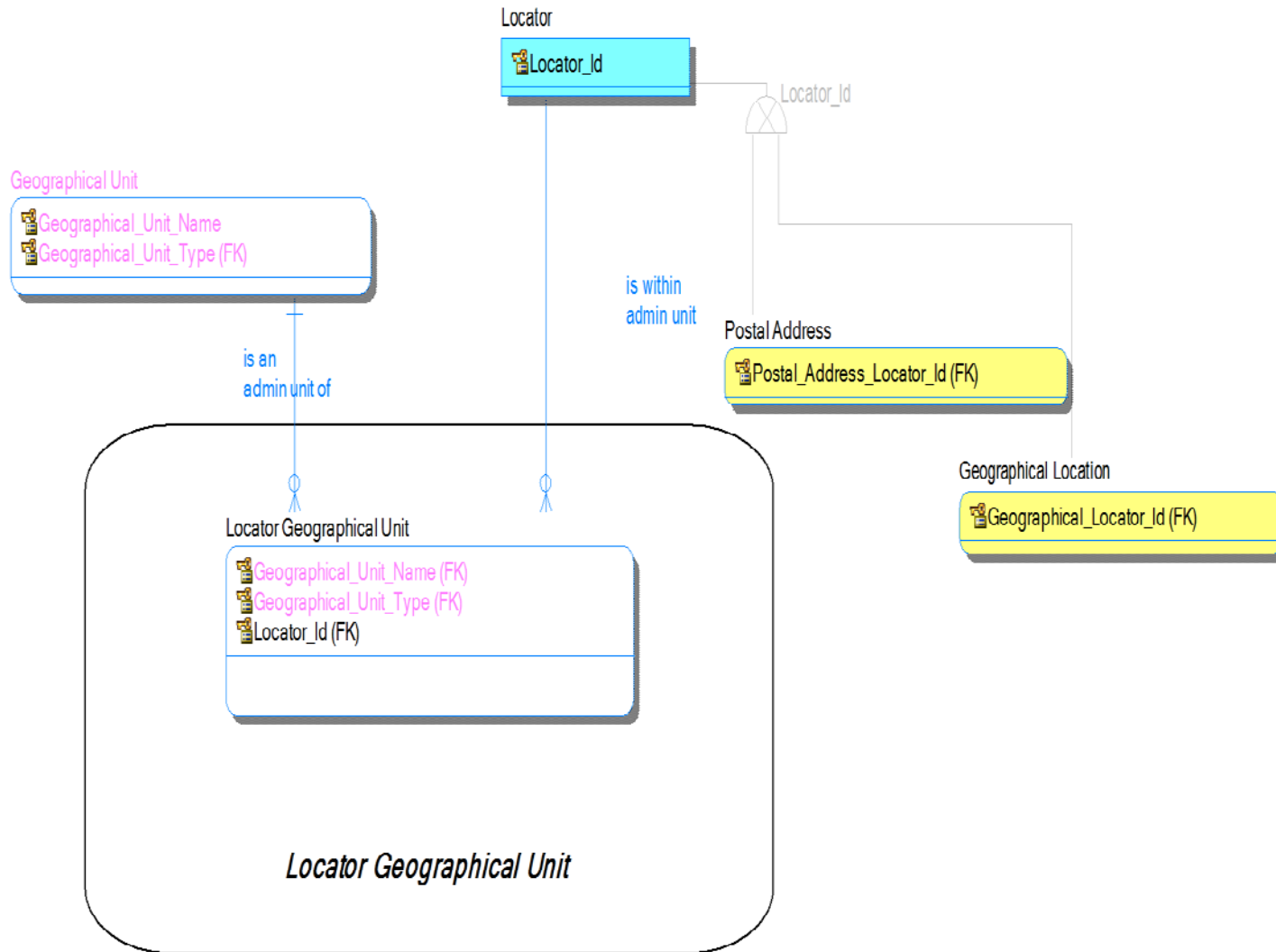
The standards for naming, notation and conventions used for this development can be found in the BDA Data Architecture Modelling Standards document. For convenience, a quick reference of the colours used in these diagrams is shown below.



1.2 Entity Definition Model



1.3 Attribute Model



1.4 Data Definitions

1.4.1 Entity: Locator Geographical Unit

The LOCATOR GEOGRAPHICAL UNIT identifies the particular GEOGRAPHICAL UNIT(s) that a LOCATOR such as POSTAL ADDRESS is contained within.

The LOCATOR GEOGRAPHICAL UNIT is linked to the LOCATOR super type as it can apply to multiple LOCATOR sub types. Currently the sub types that can be linked to a LOCATOR GEOGRAPHICAL UNIT are POSTAL ADDRESS and GEOGRAPHICAL LOCATION.

Attribute Name	Attribute Definition	P K	F K	M	Datatype	FK Source Entity	FK Source Attribute	Controlled List
Geographical_Unit_Name	The name of the GEOGRAPHICAL UNIT.	Y	Y	Y	Unicode_String(1,100)	Geographical Unit	Geographical_Unit_Name	
Geographical_Unit_Type	A controlled list of values that identifies the GEOGRAPHICAL UNIT TYPE. Values include "Church of England Diocese", "Roman Catholic Parish", "County", "Output Area", "School Place Planning Area".	Y	Y	Y	Unicode_String(1,50)	Geographical Unit	Geographical_Unit_Type	
Locator_Id	A value that denotes and distinguishes the LOCATOR.	Y	Y	Y	Simple_String(1,600)	Locator	Locator_Id	

2 CHANGES FROM PREVIOUS VERSION

Locator_Id updated to Simple_String(1,600).

3 REFERENCES

The following references are specific to this Business Data Standard:

- ESCS ISB Business Data Architecture Entity Relationship Diagram, version 11.2

The following references apply to all Business Data Standards:

- ESCS ISB Standards Overview and Context
- ESCS ISB “System“ Enterprise Architecture - Business Data Architecture
- ESCS ISB Business Data Architecture Data Types
- ESCS ISB BDA Data Architecture Modelling Standards
- ESCS ISB Management Process

4 NOTES

Version 1.0 of this Business Data Standard was originally published as Locator Geographical Admin Unit, but the standard was renamed Locator Geographical Unit in later versions.

5 COPYRIGHT NOTICE

© [Crown copyright 2015](#)

The Information Standards Board (ISB) is an advisory body to the Department for Education (DfE) and the Department for Business, Innovation and Skills (BIS). The information it produces is subject to Crown copyright, which is administered by the National Archives.

The Crown copyright protected information in this document (other than ISB or Departmental logos) may be reproduced free of charge in any format or medium under the terms of the Open Government Licence, available from the National Archives website.

Any reuse is subject to the material being reproduced accurately and not used in a misleading context. It must be acknowledged as being protected by Crown copyright and the title of the source material must be supplied with the ISB named as the corporate author.

Authorisation to reproduce any information which is identified as being the copyright of a third party must be obtained from the copyright holders concerned.