

# ISB Business Data Standard

## Learning Opportunity

Doc Ref: ISB-000006

Version: 4.0

Issue Date: 04/08/2014

### Document Version History

Version	Status	Issue Date	Modified by	Description
1.0	Approved: Recommended	24/11/2009	ISB	
2.0	Approved: Recommended	25/09/2012	ISB	
3.0	Approved: Recommended	11/06/2013	ISB	Updated due to a change to the Primary Key of the entity Learning Opportunity
4.0	Approved: Recommended	04/08/2014	ISB	New BDA incorporating JCQ changes

## Contents

<b>1</b>	<b><i>Data Standard</i></b>	<b>3</b>
1.1	Introduction	3
1.1.1	Application	3
1.1.2	Compatibility with non-ISB standards	3
1.1.3	Terminology and notation	4
1.2	Entity Definition Model	5
1.3	Attribute Model	6
1.4	Data Definitions	7
1.4.1	Entity: Learning Opportunity	7
1.4.2	Associative Entity: Learning Opportunity Subject	12
1.4.3	Associative Entity: LO Prerequisite Qualification	13
<b>2</b>	<b><i>Changes from previous version</i></b>	<b>15</b>
<b>3</b>	<b><i>References</i></b>	<b>16</b>
<b>4</b>	<b><i>Notes</i></b>	<b>16</b>
<b>5</b>	<b><i>Copyright Notice</i></b>	<b>17</b>

# 1 DATA STANDARD

## 1.1 Introduction

### 1.1.1 Application

This standard describes an offered opportunity for learning or skills acquisition. A learning opportunity can encapsulate a course, subject, or other educational opportunity, for example a GCSE Physics course, a university degree course or a vocational course in plumbing.

### 1.1.2 Compatibility with non-ISB standards

There are no known compatibility issues related to this standard.

### 1.1.3 Terminology and notation

The following sections contain:

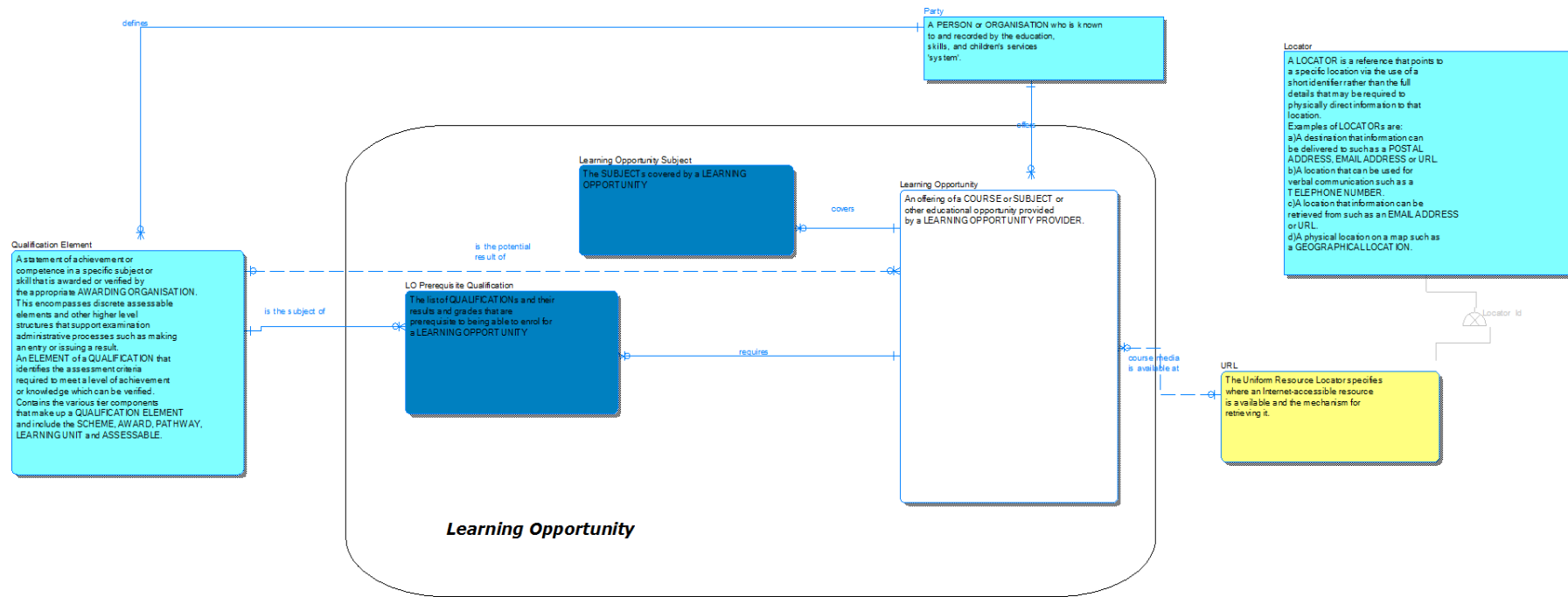
- **Entity Definition Model** – A high level diagram showing: entities; their descriptions and relationships
- **Attribute Model** – A lower level diagram showing the names of attributes making up entities. Attributes in the top section of an entities box are those making up its primary key
- **Data Definitions** – Detailed descriptions of each of the entities at an attribute level, showing attribute: name; definition; whether it is part of a key; whether it is mandatory; its data type and format; parent information and Controlled List association

Only those entities within the boundary square in the diagrams are part of this particular data standard, entities outside the boundary are shown for context purposes only (and can be found within other Business Data Standards), or separate Controlled List reference data.

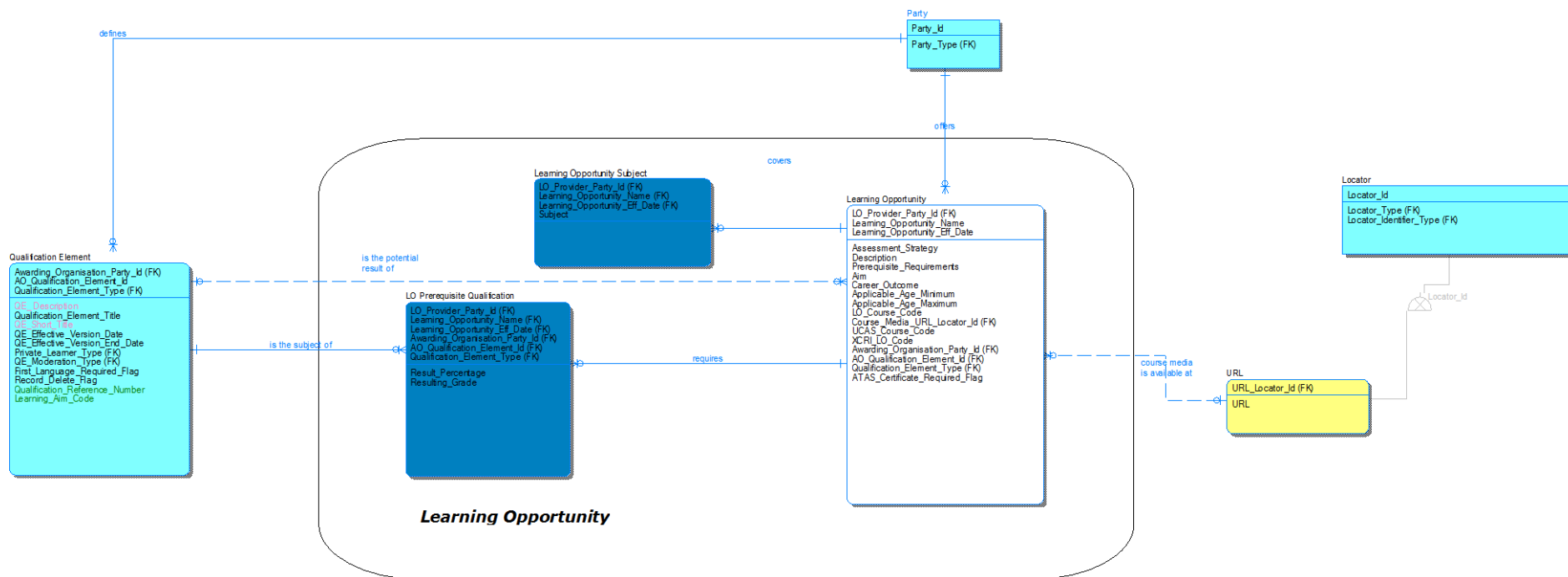
The standards for naming, notation and conventions used for this development can be found in the BDA Data Architecture Modelling Standards document. For convenience, a quick reference of the colours used in these diagrams is shown below.



## 1.2 Entity Definition Model



### 1.3 Attribute Model



## 1.4 Data Definitions

### 1.4.1 Entity: Learning Opportunity

An offering of a COURSE or SUBJECT or other educational opportunity provided by a LEARNING OPPORTUNITY PROVIDER.

Attribute Name	Attribute Definition	P K	F K	M	Datatype	FK Source Entity	FK Source Attribute	Controlled List
LO_Provider_Party_Id	A value that denotes and distinguishes the PARTY.	Y	Y	Y	Unicode_String(1,32)	Party	Party_Id	
Learning_Opportunity_Name	A value that denotes the LEARNING OPPORTUNITY	Y	N	Y	Unicode_String(1,255)			
Learning_Opportunity_Eff_Date	The date and time from which the LEARNING OPPORTUNITY is offered to LEARNERS.	Y	N	Y	Simple_Date Time			
Assessment_Strategy	The approach to implementation of an assessment, where an assessment may be formative or summative.	N	N	N	Unicode_String(1,2000)			
Description	The description of the LEARNING OPPORTUNITY in advertising terms.	N	N	N	Unicode_String(1,2000)			

Attribute Name	Attribute Definition	P K	F K	M	Datatype	FK Source Entity	FK Source Attribute	Controlled List
Prerequisite_Requirements	A description of conditions that a Learner must meet before being enrolled on a LEARNING OPPORTUNITY.	N	N	N	Unicode_String(1,2000)			
Aim	A narrative description of THE LEARNING OPPORTUNITY objectives and benefits.	N	N	N	Unicode_String(1,255)			
Career_Outcome	A narrative list of potential career path choices associated with studying this LEARNING OPPORTUNITY.	N	N	N	Unicode_String(1,255)			
Applicable_Age_Minimum	The lowest age at which Learners can benefit from the LEARNING OPPORTUNITY.	N	N	N	Simple_Integer(1,3)			
Applicable_Age_Maximum	The greatest age at which Learners can benefit from the LEARNING OPPORTUNITY.	N	N	N	Simple_Integer(1,3)			
LO_Course_Code	The Learning Provider Course Code.	N	N	N	Unicode_String(1,50)			
Course_Media_URL_Locator_Id	A value that denotes and distinguishes the LOCATOR.	N	Y	N	Unicode_String(1,36)	URL	URL_Locator_Id	



Attribute Name	Attribute Definition	P K	F K	M	Datatype	FK Source Entity	FK Source Attribute	Controlled List
UCAS_Course_Code	The UCAS course code for this LEARNING OPPORTUNITY.	N	N	N	Unicode_String(1,50)			
XCRI_LO_Code	The XCRI Code that identifies this LEARNING OPPORTUNITY.	N	N	N	Unicode_String(1,300)			
Awarding_Organisation_Party_Id	A value that denotes and distinguishes the PARTY.	N	Y	N	Unicode_String(1,32)	Qualification Element	Awarding_Organisation_Party_Id	
AO_Qualification_Element_Id <sup>1</sup>	A value that uniquely identifies the QUALIFICATION ELEMENT within an AWARDING ORGANISATION.	N	Y	N	Unicode_String(1,50)	Qualification Element	AO_Qualification_Element_Id	
Qualification_Element_Type	A controlled list of values that denotes the type and behaviour of the specific QUALIFICATION ELEMENT. Values are "Scheme", "Award", "Learning Unit", "Pathway", "Assessable".	N	Y	N	Unicode_String(1,32)	Qualification Element	Qualification_Element_Type	
ATAS_Certificate_	The Academic Technology	N	N	N	Simple_Flag			

<sup>1</sup> The same value may be used for a number of QUALIFICATION ELEMENTS provided they are differentiated by Qualification\_Element\_Type.

Attribute Name	Attribute Definition	P K	F K	M	Datatype	FK Source Entity	FK Source Attribute	Controlled List
Required_Flag	<p>Approval Scheme (ATAS) was introduced on 1 November 2007. It is used to help stop the spread of knowledge and skills that could be used in the proliferation of weapons of mass destruction (WMD) and their means of delivery. This is common with other governments around the world.</p> <p>The ATAS is designed to ensure that people who are applying to study certain sensitive subjects in the UK do not have links to WMD programmes. We advise you to find out if you need an ATAS certificate before applying for a student visa or extension.</p> <p>An ATAS certificate shows details of the course and Higher Education Institution you have applied for clearance for. If you have more than one offer from different HEIs you will need to apply for separate ATAS clearance certificates for each HEI and programme of study.</p> <p>An ATAS certificate is valid as long</p>							

Attribute Name	Attribute Definition	P K	F K	M	Datatype	FK Source Entity	FK Source Attribute	Controlled List
	as the details of your course do not change. You can apply for an ATAS certificate up to 12 months in advance of the beginning of your course.							

### 1.4.2 Associative Entity: Learning Opportunity Subject

The SUBJECTs covered by a LEARNING OPPORTUNITY

Attribute Name	Attribute Definition	P K	F K	M	Datatype	FK Source Entity	FK Source Attribute	Controlled List
LO_Provider_Party_Id	A value that denotes and distinguishes the PARTY.	Y	Y	Y	Unicode_String(1,32)	Learning Opportunity	LO_Provider_Party_Id	
Learning_Opportunity_Name	A value that denotes the LEARNING OPPORTUNITY	Y	Y	Y	Unicode_String(1,255)	Learning Opportunity	Learning_Opportunity_Name	
Learning_Opportunity_Eff_Date	The date and time from which the LEARNING OPPORTUNITY is offered to LEARNERS.	Y	Y	Y	Simple_Date Time	Learning Opportunity	Learning_Opportunity_Eff_Date	
Subject <sup>2</sup>	Branches of knowledge studied or taught. E.g. "Mathematics", "English Language", etc.	Y	N	Y	Unicode_String(1,100)			

<sup>2</sup> previously a controlled list Subject Type

### 1.4.3 Associative Entity: LO Prerequisite Qualification

The list of QUALIFICATIONS and their results and grades that are prerequisite to being able to enrol for a LEARNING OPPORTUNITY

Attribute Name	Attribute Definition	P K	F K	M	Datatype	FK Source Entity	FK Source Attribute	Controlled List
LO_Provider_Party_Id	A value that denotes and distinguishes the PARTY.	Y	Y	Y	Unicode_String(1,32)	Learning Opportunity	LO_Provider_Party_Id	
Learning_Opportunity_Name	A value that denotes the LEARNING OPPORTUNITY	Y	Y	Y	Unicode_String(1,255)	Learning Opportunity	Learning_Opportunity_Name	
Learning_Opportunity_Eff_Date	The date and time from which the LEARNING OPPORTUNITY is offered to LEARNERS.	Y	Y	Y	Simple_Date Time	Learning Opportunity	Learning_Opportunity_Eff_Date	
Awarding_Organisation_Party_Id	A value that denotes and distinguishes the PARTY.	Y	Y	Y	Unicode_String(1,32)	Qualification Element	Awarding_Organisation_Party_Id	
AO_Qualification_Element_Id <sup>3</sup>	A value that uniquely identifies the QUALIFICATION ELEMENT within an AWARDING ORGANISATION.	Y	Y	Y	Unicode_String(1,50)	Qualification Element	AO_Qualification_Element_Id	

<sup>3</sup> The same value may be used for a number of QUALIFICATION ELEMENTS provided they are differentiated by Qualification\_Element\_Type.

Attribute Name	Attribute Definition	P K	F K	M	Datatype	FK Source Entity	FK Source Attribute	Controlled List
Qualification_Element_Type	A controlled list of values that denotes the type and behaviour of the specific QUALIFICATION ELEMENT. Values are "Scheme", "Award", "Learning Unit", "Pathway", "Assessable".	Y	Y	Y	Unicode_String(1,32)	Qualification Element	Qualification_Element_Type	
Result_Percentage	The required minimum result of an AWARD ASSESSMENT as a percentage to be able to ENROL for the LEARNING OPPORTUNITY	N	N	N	Simple_Integer(1,3)			
Resulting_Grade	The required minimum grade awarded to be able to ENROL for the LEARNING OPPORTUNITY	N	N	N	Unicode_String(1,10)			

## 2 CHANGES FROM PREVIOUS VERSION

Entity definition and attribute model diagrams changed to reflect the following:

- Length of QE\_Description attribute increased from Unicode\_String(1,2000) Unicode\_String(1,3500) in the entity Qualification Element to support the longest existing description for a City & Guilds products
- Length of QE\_Short\_Title attribute increased from Unicode\_String(1,32) to Unicode\_String(1,50) in the entity Qualification Element to support AO systems other than EDI v14
- To support moving attributes URN on QE Learning Unit and Qual Number on QE Award to generic QE supertype, the following changes have been applied:
  - Attribute Unit\_Reference\_Number deleted from Learning Unit Entity
  - Attribute Qualification\_Number deleted from Award Entity
  - Attribute Qualification\_Reference\_Number Unicode\_String(1,10) added to Qualification Element Entity
- As Learning Aim Code can apply to different levels in the Qualification, following changes applied:
  - Learning\_Aim\_Code deleted from Award Entity
  - Learning\_Aim\_Code Unicode\_String(1,10) added to Qualification Element Entity
- For consistency of behaviour in the Qualification Element, the following changes have been applied:
  - Qualification Element Entity – attributes deleted:
    - Award\_Claim\_Required\_Flag
    - Late\_Award\_Cashin\_Flag
    - Cao\_Required\_Flag
    - Estimated\_Grade\_Reqd\_Flag
  - Scheme Entity – attributes deleted:
    - Entry\_Required\_Flag
    - Registration\_Reqd\_Flag
    - TRB\_Required\_Flag
- As the same result can be provided using the QE Outcome Value Type = Credits, the attribute Credit\_Value has been deleted from Assessable Entity

### 3 REFERENCES

The following references are specific to this Business Data Standard:

- ESCS ISB Business Data Architecture Entity Relationship Diagram, version 7.05

The following references apply to all Business Data Standards:

- ESCS ISB Standards Overview and Context
- ESCS ISB “System“ Enterprise Architecture - Business Data Architecture
- ESCS ISB Business Data Architecture Data Types
- ESCS ISB BDA Data Architecture Modelling Standards
- ESCS ISB Management Process

### 4 NOTES

None.



## 5 COPYRIGHT NOTICE

© [Crown copyright 2014](#)

The Information Standards Board (ISB) is an advisory body to the Department for Education (DfE) and the Department for Business, Innovation and Skills (BIS). The information it produces is subject to Crown copyright, which is administered by the National Archives.

The Crown copyright protected information in this document (other than ISB or Departmental logos) may be reproduced free of charge in any format or medium under the terms of the Open Government Licence, available from the National Archives website.

Any reuse is subject to the material being reproduced accurately and not used in a misleading context. It must be acknowledged as being protected by Crown copyright and the title of the source material must be supplied with the ISB named as the corporate author.

Authorisation to reproduce any information which is identified as being the copyright of a third party must be obtained from the copyright holders concerned.