

Geographical Unit

Version: 2.0

Issue Date: 08/12/2014

Document Version History

Version	Status	Approval Date	Issue Date	Modified by	Description
1.0	Approved Recommended	04/03/2014	07/04/2014	ISB	New Standard
2.0	Approved: Recommended	18/11/2014	08/12/2014	ISB	See changes listed under Section 2

Contents

1	DATA STANDARD	3
1.1	Introduction	3
1.1.1	Application	3
1.1.2	Compatibility with non-ISB standards	3
1.2	Terminology and notation	4
1.3	Entity Definition Model	5
1.4	Attribute Model	6
1.5	Data Definitions	7
1.5.1	Entity: Geographical Unit	7
1.5.2	Entity: Geographical Unit Coordinates	8
1.5.3	Associative Entity: Geographical Unit Hierarchy	9
1.5.4	Entity: Geographical Unit Information	11
2	CHANGES FROM PREVIOUS VERSION	12
3	REFERENCES	12
4	NOTES	13
5	COPYRIGHT NOTICE	14

1 DATA STANDARD

1.1 Introduction

1.1.1 Application

This standard can be used to exchange data describing the deliverables produced as a result of delivery of a **Geographical Unit** where:

The GEOGRAPHICAL UNIT is a geographical sub-division of land for administrative purposes such as “Church of England Diocese”, “Roman Catholic Parish”, “County”, “Output Area”, “School Place Planning Area”, etc.

1.1.2 Compatibility with non-ISB standards

There are no known compatibility issues related to this standard.

1.2 Terminology and notation

The following sections contain:

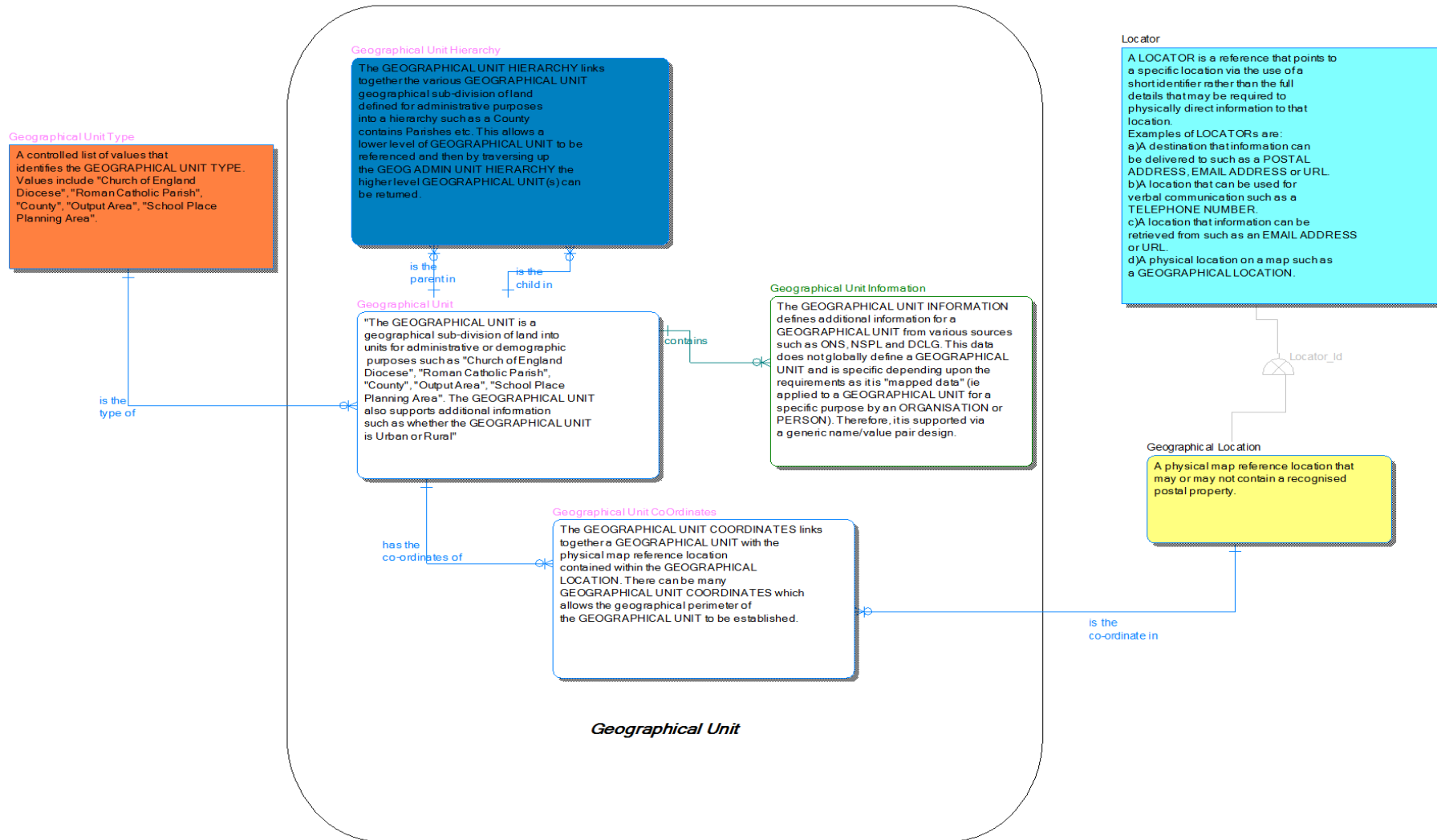
- **Entity Definition Model** – A high level diagram showing: entities; their descriptions and relationships
- **Attribute Model** – A lower level diagram showing the names of attributes making up entities. Attributes in the top section of an entities box are those making up its primary key
- **Data Definitions** – Detailed descriptions of each of the entities at an attribute level, showing attribute: name; definition; whether it is part of a key; whether it is mandatory; its data type and format; parent information and Controlled List association

Only those entities within the boundary square in the diagrams are part of this particular data standard, entities outside the boundary are shown for context purposes only (and can be found within other Business Data Standards), or separate Controlled List reference data.

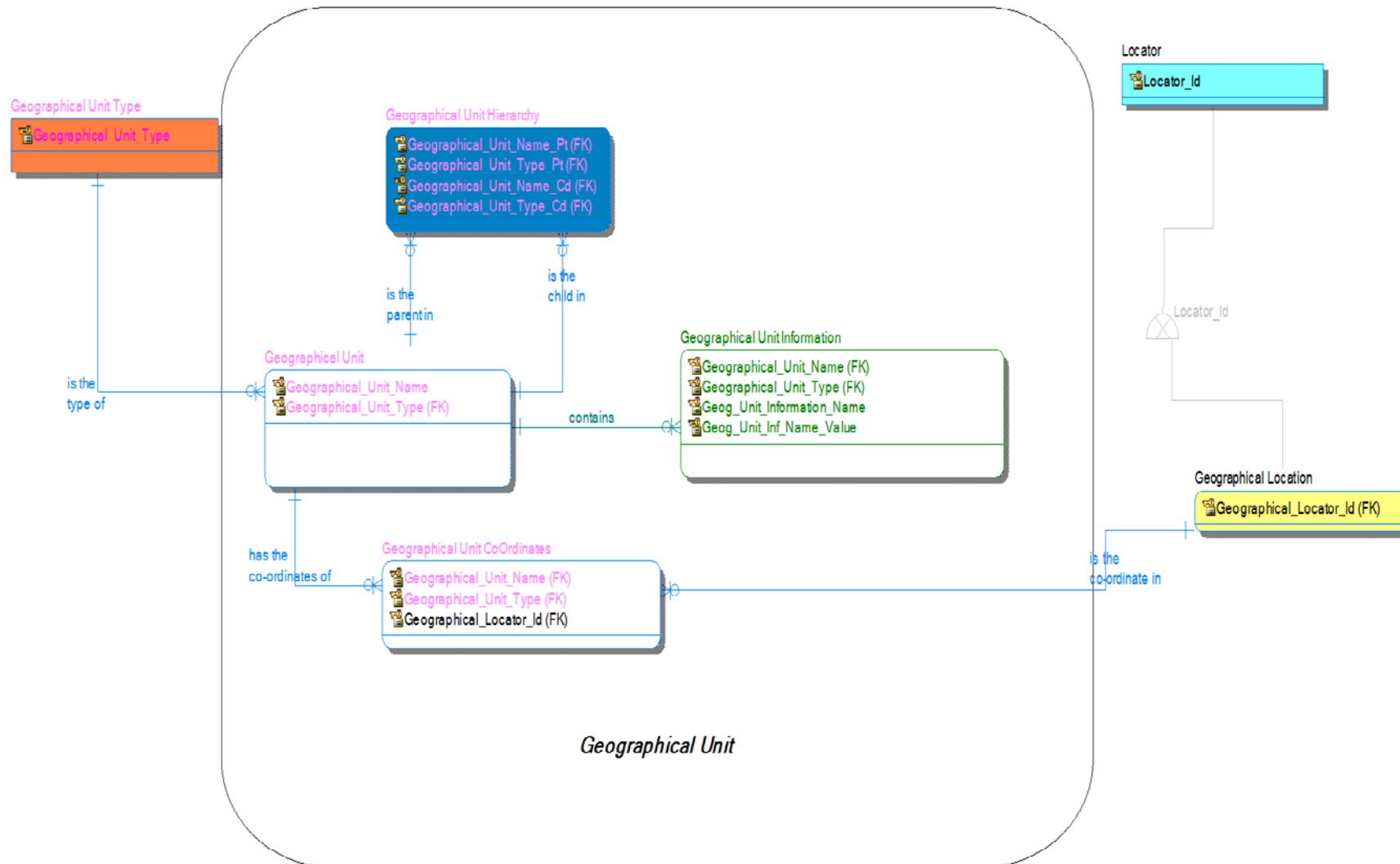
The standards for naming, notation and conventions used for this development can be found in the BDA Data Architecture Modelling Standards document. For convenience, a quick reference of the colours used in these diagrams is shown below.



1.3 Entity Definition Model



1.4 Attribute Model



1.5 Data Definitions

1.5.1 Entity: Geographical Unit

"The GEOGRAPHICAL UNIT is a geographical sub-division of land into units for administrative or demographic purposes such as "Church of England Diocese", "Roman Catholic Parish", "County", "Output Area", "School Place Planning Area". The GEOGRAPHICAL UNIT also supports additional information such as whether the GEOGRAPHICAL UNIT is Urban or Rural".

Attribute Name	Attribute Definition	P K	F K	M	Datatype	FK Source Entity	FK Source Attribute	Controlled List
Geographical_Unit _Name	The name of the GEOGRAPHICAL UNIT.	Y	N	Y	Unicode_String(1,100)	Geographic al Unit	Geographical_ Unit_Name	
Geographical_Unit _Type	A controlled list of values that identifies the GEOGRAPHICAL UNIT TYPE. Values include "Church of England Diocese", "Roman Catholic Parish", "County", "Output Area", "School Place Planning Area".	Y	Y	Y	Unicode_String(1,50)			Geographical Unit Type

1.5.2 Entity: Geographical Unit Coordinates

The GEOGRAPHICAL UNIT COORDINATES links together a GEOGRAPHICAL UNIT with the physical map reference location contained within the GEOGRAPHICAL LOCATION. There can be many GEOGRAPHICAL UNIT COORDINATES which allows the geographical perimeter of the GEOGRAPHICAL UNIT to be established.

Attribute Name	Attribute Definition	P K	F K	M	Datatype	FK Source Entity	FK Source Attribute	Controlled List
Geographical_Unit_Name	The name of the GEOGRAPHICAL UNIT.	Y	Y	Y	Unicode_String(1,100)	Geographical Unit	Geographical_Unit_Name	
Geographical_Unit_Type	A controlled list of values that identifies the GEOGRAPHICAL UNIT TYPE. Values include "Church of England Diocese", "Roman Catholic Parish", "County", "Output Area", "School Place Planning Area".	Y	Y	Y	Unicode_String(1,50)	Geographical Unit	Geographical_Unit_Type	
Geographical_Locator_Id	A value that denotes and distinguishes the LOCATOR.	Y	Y	Y	Unicode_String(1,36)	Geographical Location	Geographical_Locator_Id	

1.5.3 Associative Entity: Geographical Unit Hierarchy

The GEOGRAPHICAL UNIT HIERARCHY links together the various GEOGRAPHICAL UNIT geographical sub-division of land defined for administrative purposes into a hierarchy such as a County contains Parishes etc. This allows a lower level of GEOGRAPHICAL UNIT to be referenced and then by traversing up the GEOG ADMIN UNIT HIERARCHY the higher level GEOGRAPHICAL UNIT(s) can be returned.

Attribute Name	Attribute Definition	P K	F K	M	Datatype	FK Source Entity	FK Source Attribute	Controlled List
Geographical_Unit_Name_Pt ¹	The name of the GEOGRAPHICAL UNIT.	Y	Y	Y	Unicode_String(1,100)	Geographical Unit	Geographical_Unit_Name	
Geographical_Unit_Type_Pt	A controlled list of values that identifies the GEOGRAPHICAL UNIT TYPE. Values include "Church of England Diocese", "Roman Catholic Parish", "County", "Output Area", "School Place Planning Area".	Y	Y	Y	Unicode_String(1,50)	Geographical Unit	Geographical_Unit_Type	
Geographical_Unit_Name_Cd ²	The name of the GEOGRAPHICAL UNIT.	Y	Y	Y	Unicode_String(1,100)	Geographical Unit	Geographical_Unit_Name	

¹ This is the parent instance of Geographical_Unit_Name in the hierarchy

² This is the child instance of Geographical_Unit_Name in the hierarchy

Attribute Name	Attribute Definition	P K	F K	M	Datatype	FK Source Entity	FK Source Attribute	Controlled List
Geographical_Unit_Type_Cd	A controlled list of values that identifies the GEOGRAPHICAL UNIT TYPE. Values include "Church of England Diocese", "Roman Catholic Parish", "County", "Output Area", "School Place Planning Area".	Y	Y	Y	Unicode_String(1,50)	Geographical Unit	Geographical_Unit_Type	

1.5.4 Entity: Geographical Unit Information

The GEOGRAPHICAL UNIT INFORMATION defines additional information for a GEOGRAPHICAL UNIT from various sources such as ONS, NSPL and DCLG. This data does not globally define a GEOGRAPHICAL UNIT and is specific depending upon the requirements as it is "mapped data" (ie applied to a GEOGRAPHICAL UNIT for a specific purpose by an ORGANISATION or PERSON). Therefore, it is supported via a generic name/value pair design.

Attribute Name	Attribute Definition	P K	F K	M	Datatype	FK Source Entity	FK Source Attribute	Controlled List
Geographical_Unit_Name	The name of the GEOGRAPHICAL UNIT.	Y	Y	Y	Unicode_String(1,100)	Geographical Unit	Geographical_Unit_Name	
Geographical_Unit_Type	A controlled list of values that identifies the GEOGRAPHICAL UNIT TYPE. Values include "Church of England Diocese", "Roman Catholic Parish", "County", "Output Area", "School Place Planning Area".	Y	Y	Y	Unicode_String(1,50)	Geographical Unit	Geographical_Unit_Type	
Geog_Unit_Information_Name	The name of the GEOGRAPHICAL UNIT INFORMATION eg "Urban/Rural Indicator".	Y	N	Y	Unicode_String(1,100)	Geog_Unit_Information	Geog_Unit_Information_Name	
Geog_Unit_Information_Value	The value of the related GEOGRAPHICAL UNIT INFORMATION attribute eg "Rural".	Y	N	Y	Unicode_String(1,100)	Geog_Unit_Information_Value	Geog_Unit_Information_Value	

2 CHANGES FROM PREVIOUS VERSION

The standard has been renamed from Geographical Admin Unit to Geographical Unit to reflect the proposed use of the standard for all types of geographical units, whether or not an administrator is associated with them. In line with this every related entity has been similarly renamed.

There is a new entity Geographical Unit Information which is used to define additional “mapped” information associated with a Geographical Unit, such as data from ONS (Office for National Statistics).

The length of Geographical_Unit_Name has been increased from Unicode_String(1,50) to Unicode_String(1,100) to accommodate known examples of longer names.

3 REFERENCES

The following references are specific to this Business Data Standard:

- ESCS ISB Business Data Architecture Entity Relationship Diagram, version 8.1
- ESCS ISB Controlled List, Geographical Unit Type

The following references apply to all Business Data Standards:

- ESCS ISB Standards Overview and Context
- ESCS ISB “System“ Enterprise Architecture - Business Data Architecture
- ESCS ISB Business Data Architecture Data Types
- ESCS ISB BDA Data Architecture Modelling Standards
- ESCS ISB Management Process

4 NOTES

Version 1.0 of this Business Data Standard was originally published as Geographical Admin Unit, but the standard was renamed Geographical Unit in later versions.

5 COPYRIGHT NOTICE

© [Crown copyright 2014](#)

The Information Standards Board (ISB) is an advisory body to the Department for Education (DfE) and the Department for Business, Innovation and Skills (BIS). The information it produces is subject to Crown copyright, which is administered by the National Archives.

The Crown copyright protected information in this document (other than ISB or Departmental logos) may be reproduced free of charge in any format or medium under the terms of the Open Government Licence, available from the National Archives website.

Any reuse is subject to the material being reproduced accurately and not used in a misleading context. It must be acknowledged as being protected by Crown copyright and the title of the source material must be supplied with the ISB named as the corporate author.

Authorisation to reproduce any information which is identified as being the copyright of a third party must be obtained from the copyright holders concerned.