

Generic Service Offer

Version: 3.0

Issue Date: 08/12/2014

Document Version History

Version	Status	Approval Date	Issue Date	Modified by	Description
1.0	Approved: Recommended	20/04/2010	20/04/2010	ISB	Approved as recommended status
2.0	Approved: Recommended	27/11/2012	27/11/2012	ISB	Approved as recommended status
3.0	Approved: Recommended	18/11/2014	08/12/2014	ISB	Updated due to a change in the Primary Key of entities Generic Offer Pricepoint and GServ Offer Pricepoint Criteria.

Contents

1	<i>Data Standard</i>	3
1.1	Introduction	3
1.1.1	Application	3
1.1.2	Compatibility with non-ISB standards	3
1.1.3	Terminology and notation	4
1.2	Entity Definition Model	5
1.3	Attribute Model	6
1.4	Data Definitions	7
1.4.1	Entity: Generic Service Channel	7
1.4.2	Entity: Generic Service Offer	8
1.4.3	Entity: Generic Service Offered	9
1.4.4	Entity: Generic Service Pricepoint	11
1.4.5	Entity: GServ Offer Pricepoint Criteria	14
2	<i>Changes from previous version</i>	20
3	<i>References</i>	21
4	<i>Notes</i>	21
5	<i>Copyright Notice</i>	22

1 DATA STANDARD

1.1 Introduction

1.1.1 Application

This standard can be used to exchanged data describing the deliverables produced as a result of delivery of a Generic Service, where:

It describes an offer made by a party for the supply of one or more generic services.

“Service” has the natural English meaning of: activities performed by one Party for the benefit of another Party”. Note that this includes a very wide range of activities, for example acts of kindness, parental functions and many other activities which are not of interest from a data exchange standards perspective. The term service is only used in the general English sense for descriptive purposes.

ISB data exchange standards are only concerned with a restricted set of services, called ESCS Services, where:

“ESCS Service” means: services delivered by ESCS Parties where the service requestor recognises the service as a coherent whole or consumable product, the service is formally recorded, and the activities do not include provision of learning or assessments of learning achievements.

ESCS Services can be further categorised as “bespoke” or “Generic” where:

Generic Service means: an ESCS service such that the service can be uniquely identified by the Service Type, and by two Parties engaged with the service. An example of this is;

Exclusion Assessment “Service” is identified by the Learning Provider, the Learner and the date of Assessment Service.

This standard only addresses Generic Services. Note that elements of this standard are expected to be repeated in standards covering other “bespoke” ESCS services.

1.1.2 Compatibility with non-ISB standards

There are no known compatibility issues related to this standard.

1.1.3 Terminology and notation

The following sections contain:

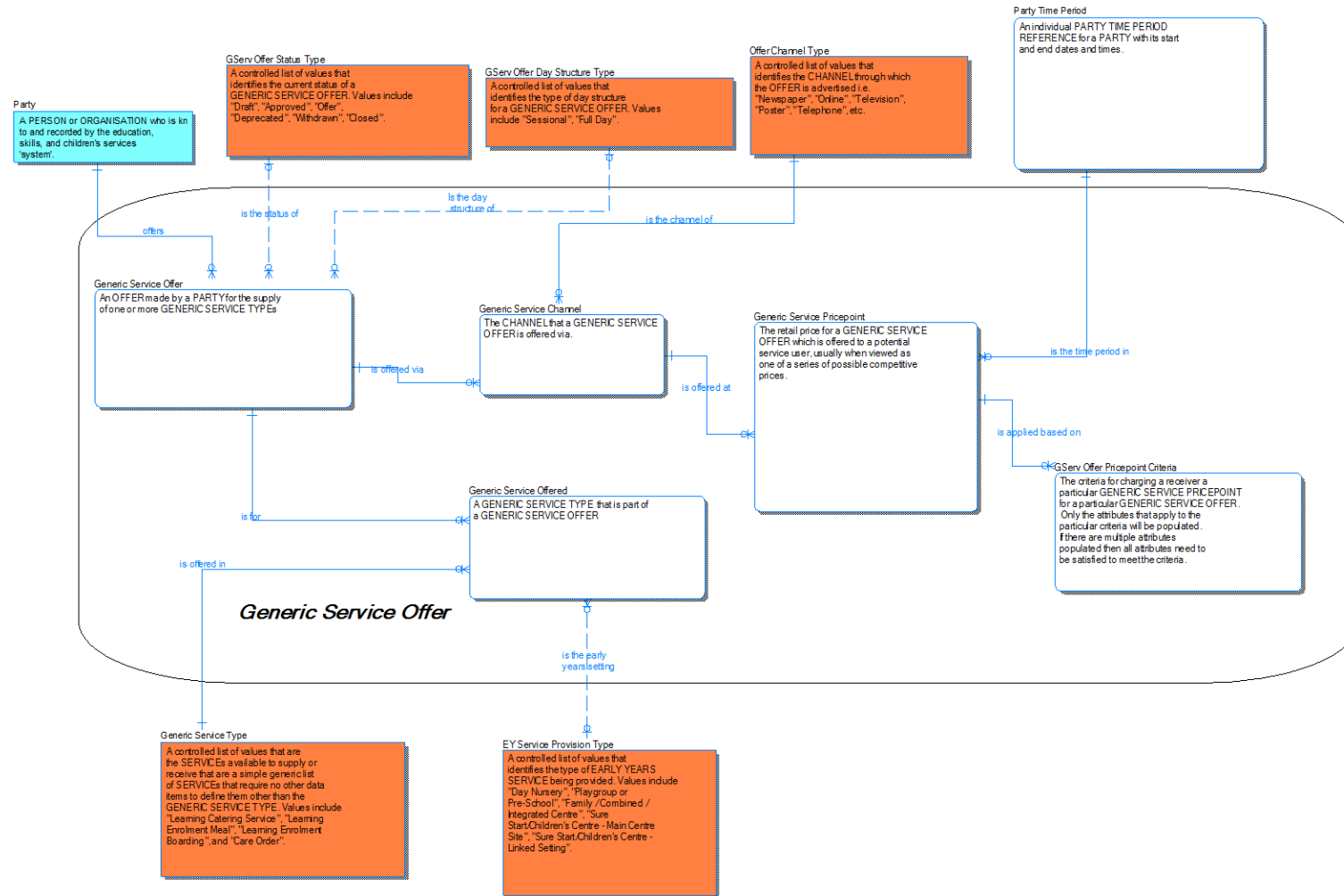
- **Entity Definition Model** – A high level diagram showing: entities; their descriptions and relationships
- **Attribute Model** – A lower level diagram showing the names of attributes making up entities. Attributes in the top section of an entities box are those making up its primary key
- **Data Definitions** – Detailed descriptions of each of the entities at an attribute level, showing attribute: name; definition; whether it is part of a key; whether it is mandatory; its data type and format; parent information and Controlled List association

Only those entities within the boundary square in the diagrams are part of this particular data standard, entities outside the boundary are shown for context purposes only (and can be found within other Business Data Standards), or separate Controlled List reference data.

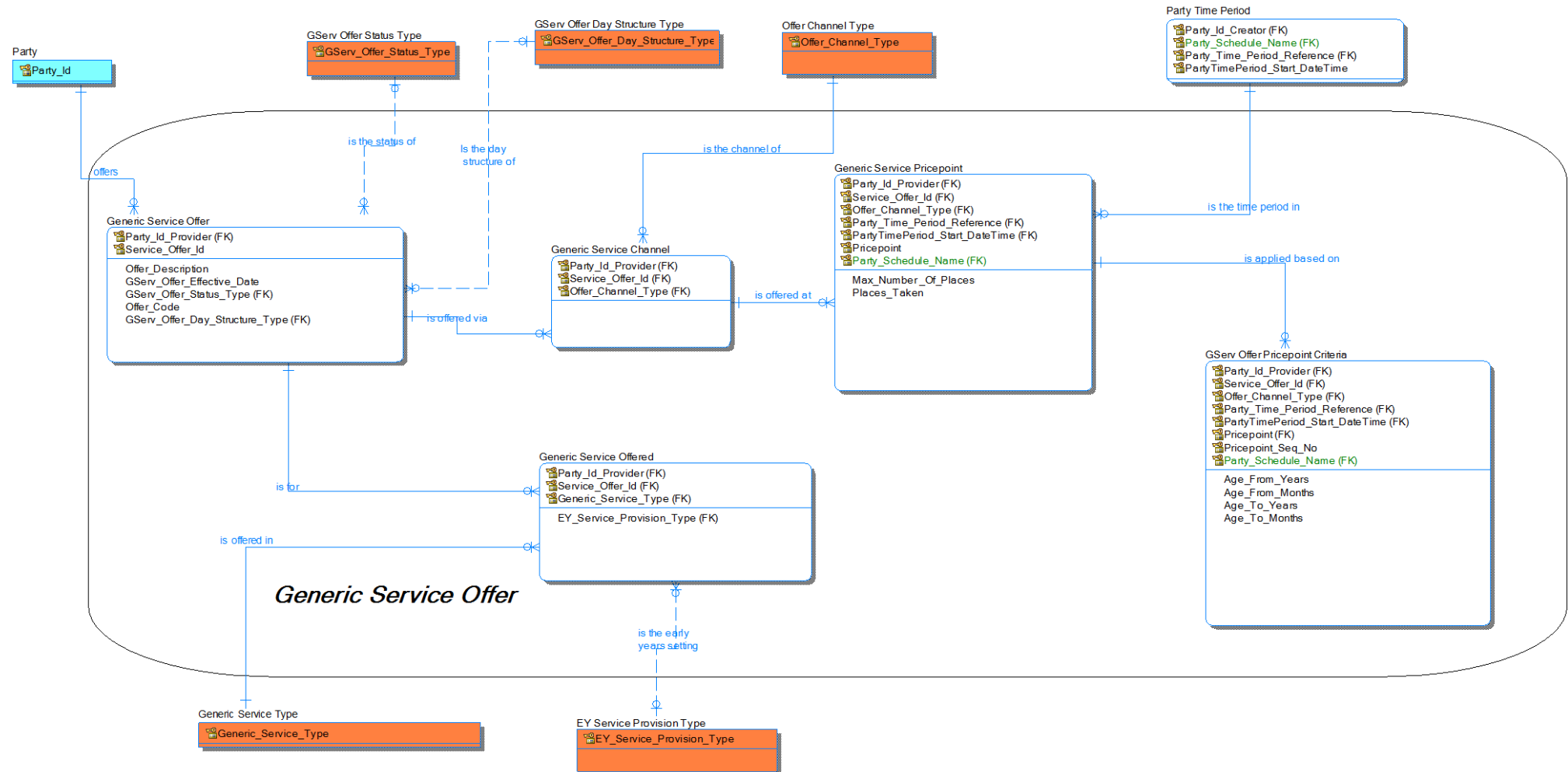
The standards for naming, notation and conventions used for this development can be found in the BDA Data Architecture Modelling Standards document. For convenience, a quick reference of the colours used in these diagrams is shown below.



1.2 Entity Definition Model



1.3 Attribute Model



1.4 Data Definitions

1.4.1 Entity: Generic Service Channel

The CHANNEL that a GENERIC SERVICE OFFER is offered via.

Attribute Name	Attribute Definition	P K	F K	M	Datatype	FK Source Entity	FK Source Attribute	Controlled List
Party_Id_Provider	A value that denotes and distinguishes the PARTY.	Y	Y	Y	Unicode_String(1,32)	Generic Service Offer	Party_Id_Provider	
Service_Offer_Id	The code assigned by the PROVIDER for the GENERIC SERVICE OFFER.	Y	Y	Y	Unicode_String(1,50)	Generic Service Offer	Service_Offer_Id	
Offer_Channel_Type	A controlled list of values that identifies the CHANNEL through which the OFFER is advertised i.e. "Newspaper", "Online", "Television", "Poster", "Telephone", etc.	Y	Y	Y	Unicode_String(1,50)			Offer Channel Type

1.4.2 Entity: Generic Service Offer

An OFFER made by a PARTY for the supply of one or more GENERIC SERVICE TYPEs.

Attribute Name	Attribute Definition	P K	F K	M	Datatype	FK Source Entity	FK Source Attribute	Controlled List
Party_Id_Provider	A value that denotes and distinguishes the PARTY.	Y	Y	Y	Unicode_String(1,32)	Party	Party_Id	
Service_Offer_Id	The code assigned by the PROVIDER for the GENERIC SERVICE OFFER.	Y	N	Y	Unicode_String(1,50)			
Offer_Description	"The characteristics of the particular GENERIC SERVICE OFFER."	N	N	N	Unicode_String(1,500)			
GServ_Offer_Effective_Date	The date from which this GENERIC SERVICE OFFER is available from.	N	N	N	Simple_Date			
GServ_Offer_Status_Type	A controlled list of values that identifies the current status of a GENERIC SERVICE OFFER. Values include "Draft", "Approved", "Offer", "Deprecated", "Withdrawn", "Closed".	N	Y	N	Unicode_String(1,20)			Generic Service Offer Status Type

Attribute Name	Attribute Definition	P K	F K	M	Datatype	FK Source Entity	FK Source Attribute	Controlled List
Offer_Code	Code assigned by the provider for the PRODUCTISED SERVICE OFFER.	N	N	N	Unicode_String(1,50)			
GServ_Offer_Day_Structure_Type	A controlled list of values that identifies the type of day structure for a GENERIC SERVICE OFFER. Values include "Sessional", "Full Day".	N	Y	N	Unicode_String(1,32)			Generic Service Offer Day Structure Type

1.4.3 Entity: Generic Service Offered

A GENERIC SERVICE TYPE that is part of a GENERIC SERVICE OFFER.

Attribute Name	Attribute Definition	P K	F K	M	Datatype	FK Source Entity	FK Source Attribute	Controlled List
Party_Id_Provider	A value that denotes and distinguishes the PARTY.	Y	Y	Y	Unicode_String(1,32)	Generic Service Offer	Party_Id_Provider	
Service_Offer_Id	The code assigned by the PROVIDER for the GENERIC SERVICE OFFER.	Y	Y	Y	Unicode_String(1,50)	Generic Service Offer	Service_Offer_Id	

Attribute Name	Attribute Definition	P K	F K	M	Datatype	FK Source Entity	FK Source Attribute	Controlled List
Generic_Service_Type	A controlled list of values that are the SERVICES available to supply or receive that are a simple generic list of SERVICES that require no other data items to define them other than the GENERIC SERVICE TYPE. Values include "Learning Catering Service", "Learning Enrolment Meal", "Learning Enrolment Boarding", and "Care Order".	Y	Y	Y	Unicode_String(1,100)			Generic Service Type
EY_Service_Provision_Type	A controlled list of values that identifies the type of EARLY YEARS SERVICE being provided. Values include "Day Nursery", "Playgroup or Pre-School", "Family / Combined / Integrated Centre", "Sure Start/Children's Centre - Main Centre Site", "Sure Start/Children's Centre - Linked Setting".	N	Y	N	Unicode_String(1,50)			EY Service Provision Type

1.4.4 Entity: Generic Service Pricepoint

The retail price for a GENERIC SERVICE OFFER which is offered to a potential service user, usually when viewed as one of a series of possible competitive prices.

Attribute Name	Attribute Definition	P K	F K	M	Datatype	FK Source Entity	FK Source Attribute	Controlled List
Party_Id_Provider	A value that denotes and distinguishes the PARTY.	Y	Y	Y	Unicode_String(1,32)	Generic Service Channel	Party_Id_Provider	
Service_Offer_Id	The code assigned by the PROVIDER for the GENERIC SERVICE OFFER.	Y	Y	Y	Unicode_String(1,50)	Generic Service Channel	Service_Offer_Id	
Offer_Channel_Type	A controlled list of values that identifies the CHANNEL through which the OFFER is advertised i.e. "Newspaper", "Online", "Television", "Poster", "Telephone", etc.	Y	Y	Y	Unicode_String(1,50)	Generic Service Channel	Offer_Channel_Type	
Party_Time_Period_Reference	A Reference that identifies divisions of scheduled time such as: a) Term periods e.g. Spring Term, Summer Term etc. b) Weeks e.g. Week 1, Week 2 etc.	Y	Y	Y	Unicode_String(1,100)	Party Time Period	Party_Time_Period_Reference	

Attribute Name	Attribute Definition	P K	F K	M	Datatype	FK Source Entity	FK Source Attribute	Controlled List
	C) Days of the week e.g. Monday, Tuesday etc. d) Financial Quarters e.g. Financial Quarter 1, Financial Quarter 2 etc. e) Financial Years e.g. Financial Year 2011 The PARTY TIME PERIOD REFERENCE does not contain dates/times as it is used repeatedly and only holds information common to all uses of that reference. For the actual dates and times that apply in a particular instance of the period, these are added in the PARTY TIME PERIOD that links a particular TIME PERIOD to its actual start and end date/time and to a PARTY SCHEDULE.							
PartyTimePeriod_Start_DateTime	The date and time of the start of the PARTY TIME PERIOD.	Y	Y	Y	Simple_Date Time	Party Time Period	PartyTimePeriod_Start_Date Time	

Attribute Name	Attribute Definition	P K	F K	M	Datatype	FK Source Entity	FK Source Attribute	Controlled List
Pricepoint	The retail price for a GENERIC SERVICE OFFER which is offered to a potential service user, usually when viewed as one of a series of possible competitive prices.	Y	N	Y	Simple_Decimal(9,2)			
Party_Id_Creator	A value that denotes and distinguishes the PARTY.	Y	Y	Y	Unicode_String(1,32)	Party Time Period	Party_Id_Creator	
Party_Schedule_Name	The name given to the PARTY SCHEDULE. E.g. Academic Calendar 2013, June Series 2013, etc.	Y	Y	Y	Unicode_String(1,100)	Party Time Period	Party_Schedule_Name	
Max_Number_Of_Places	The maximum number of places which can be offered concurrently for this GENERIC SERVICE PRICEPOINT. This is a provider decision, that is, it may differ from applicable constraints (e.g. the regulated maximum).	N	N	N	Simple_Integer(1,4)			
Places_Taken	The number of committed places for this GENERIC SERVICE PRICEPOINT.	N	N	N	Simple_Integer(1,4)			

1.4.5 Entity: GServ Offer Pricepoint Criteria

The criteria for charging a receiver a particular GENERIC SERVICE PRICEPOINT for a particular GENERIC SERVICE OFFER. Only the attributes that apply to the particular criteria will be populated. If there are multiple attributes populated then all attributes need to be satisfied to meet the criteria.

Attribute Name	Attribute Definition	P K	F K	M	Datatype	FK Source Entity	FK Source Attribute	Controlled List
Party_Id_Provider	A value that denotes and distinguishes the PARTY.	Y	Y	Y	Unicode_String(1,32)	Generic Service Pricepoint	Party_Id_Provider	
Service_Offer_Id	The code assigned by the PROVIDER for the GENERIC SERVICE OFFER.	Y	Y	Y	Unicode_String(1,50)	Generic Service Pricepoint	Service_Offer_Id	
Offer_Channel_Type	A controlled list of values that identifies the CHANNEL through which the OFFER is advertised i.e. "Newspaper", "Online", "Television", "Poster", "Telephone", etc.	Y	Y	Y	Unicode_String(1,50)	Generic Service Pricepoint	Offer_Channel_Type	
Party_Time_Period_Reference	A Reference that identifies divisions of scheduled time such as: a) Term periods e.g. Spring Term, Summer Term etc. b) Weeks e.g. Week 1, Week 2	Y	Y	Y	Unicode_String(1,100)	Generic Service Pricepoint	Party_Time_Period_Reference	

Attribute Name	Attribute Definition	P K	F K	M	Datatype	FK Source Entity	FK Source Attribute	Controlled List
	etc. C) Days of the week e.g. Monday, Tuesday etc. d) Financial Quarters e.g. Financial Quarter 1, Financial Quarter 2 etc. e) Financial Years e.g. Financial Year 2011 The PARTY TIME PERIOD REFERENCE does not contain dates/times as it is used repeatedly and only holds information common to all uses of that reference. For the actual dates and times that apply in a particular instance of the period, these are added in the PARTY TIME PERIOD that links a particular TIME PERIOD to its actual start and end date/time and to a PARTY SCHEDULE.							
PartyTimePeriod_Start_DateTime	The date and time of the start of the PARTY TIME PERIOD.	Y	Y	Y	Simple_Date Time	Generic Service Pricepoint	PartyTimePeriod_Start_Date Time	

Attribute Name	Attribute Definition	P K	F K	M	Datatype	FK Source Entity	FK Source Attribute	Controlled List
Pricepoint	The retail price for a GENERIC SERVICE OFFER which is offered to a potential service user, usually when viewed as one of a series of possible competitive prices.	Y	Y	Y	Simple_Decimal(9,2)	Generic Service Pricepoint	Pricepoint	
Pricepoint_Seq_No	A sequence number indicating the GSERV OFFER PRICEPOINT CRITERIA's position in the list of GSERV OFFER PRICEPOINT CRITERIA for a particular GENERIC SERVICE PRICEPOINT.	Y	N	Y	Simple_Integer(1,3)			
Party_Id_Creator	A value that denotes and distinguishes the PARTY.	Y	Y	Y	Unicode_String(1,32)	Generic Service Pricepoint	Party_Id_Creator	
Party_Schedule_Name	The name given to the PARTY SCHEDULE. E.g. Academic Calendar 2013, June Series 2013, etc.	Y	Y	Y	Unicode_String(1,100)	Generic Service Pricepoint	Party_Schedule_Name	

Attribute Name	Attribute Definition	P K	F K	M	Datatype	FK Source Entity	FK Source Attribute	Controlled List
Age_From_Years	<p>The year component of the minimum age that a PERSON is eligible to receive the service at this GENERIC SERVICE PRICEPOINT. Where a value exists in Age_From_Months then the Age_From_Years is in addition to the Age_From_Months value.</p> <p>E.g. 1) age required is 3 years and 6 months. Age_From_Years = 3, Age_From_Month = 6.</p> <p>2) If the age required is exactly 3 years then Age_From_Years = 3, Age_From_Months would be zero.</p> <p>3) If the age required is 5 months then Age_From_Years = 0, Age_From_Months = 5.</p>	N	N	N	Simple_Integer(1,3)			

Attribute Name	Attribute Definition	P K	F K	M	Datatype	FK Source Entity	FK Source Attribute	Controlled List
Age_From_Months	<p>The month component of the minimum age that a PERSON is eligible to receive the service at this GENERIC SERVICE PRICEPOINT. Where a value exists in Age_From_Months then the Age_From_Years is in addition to the Age_From_Months value.</p> <p>E.g. 1) age required is 3 years and 6 months. Age_From_Years = 3, Age_From_Month = 6.</p> <p>2) If the age required is exactly 3 years then Age_From_Years = 3, Age_From_Months would be zero.</p> <p>3) If the age required is 5 months then Age_From_Years = 0, Age_From_Months = 5.</p>	N	N	N	Simple_Integer(1,2)			

Attribute Name	Attribute Definition	P K	F K	M	Datatype	FK Source Entity	FK Source Attribute	Controlled List
Age_To_Years	<p>The year component of the maximum age that a PERSON is eligible to receive the service at this GENERIC SERVICE PRICEPOINT. Where a value exists in Age_To_Months then the Age_To_Years is in addition to the Age_To_Months value.</p> <p>E.g. 1) age required is 3 years and 6 months. Age_To_Years = 3, Age_To_Month = 6.</p> <p>2) If the age required is exactly 3 years then Age_To_Years = 3, Age_To_Months would be zero.</p> <p>3) If the age required is 8 months then Age_To_Years = 0, Age_To_Months = 8.</p>	N	N	N	Simple_Integer(1,3)			

Attribute Name	Attribute Definition	P K	F K	M	Datatype	FK Source Entity	FK Source Attribute	Controlled List
Age_To_Months	<p>The month component of the maximum age that a PERSON is eligible to receive the service at this GENERIC SERVICE PRICEPOINT. Where a value exists in Age_To_Months then the Age_To_Years is in addition to the Age_To_Months value.</p> <p>E.g. 1) age required is 3 years and 6 months. Age_To_Years = 3, Age_To_Month = 6.</p> <p>2) If the age required is exactly 3 years then Age_To_Years = 3, Age_To_Months would be zero.</p> <p>3) If the age required is 8 months then Age_To_Years = 0, Age_To_Months = 8.</p>	N	N	N	Simple_Integer(1,2)			

2 CHANGES FROM PREVIOUS VERSION

Party_Schedule_Name has been added to Generic Service Pricepoint and GServ Offer Pricepoint as an Identifying attribute from key propagation from Party Time Period.

3 REFERENCES

The following references are specific to this Business Data Standard:

- ESCS ISB Business Data Architecture Entity Relationship Diagram, version 8.01.
- ISB, Controlled List, Generic Service Offer Status Type
- ISB, Controlled List, Generic Service Offer Day Structure Type
- ISB, Controlled List, Offer Channel Type
- ISB, Controlled List, Generic Service Type
- ISB, Controlled List, EY Service Provision Type

The following references apply to all Business Data Standards:

- ESCS ISB Standards Overview and Context
- ESCS ISB "System" Enterprise Architecture - Business Data Architecture
- ESCS ISB Business Data Architecture Data Types
- ESCS ISB BDA Data Architecture Modelling Standards
- ESCS ISB Management Process

4 NOTES

None.

5 COPYRIGHT NOTICE

© [Crown copyright 2014](#)

The Information Standards Board (ISB) is an advisory body to the Department for Education (DfE) and the Department for Business, Innovation and Skills (BIS). The information it produces is subject to Crown copyright, which is administered by the National Archives.

The Crown copyright protected information in this document (other than ISB or Departmental logos) may be reproduced free of charge in any format or medium under the terms of the Open Government Licence, available from the National Archives website.

Any reuse is subject to the material being reproduced accurately and not used in a misleading context. It must be acknowledged as being protected by Crown copyright and the title of the source material must be supplied with the ISB named as the corporate author.

Authorisation to reproduce any information which is identified as being the copyright of a third party must be obtained from the copyright holders concerned.